



## CYPRUS (CYP)

Population: 748 600 (1988)

Area: 9 250 km<sup>2</sup>



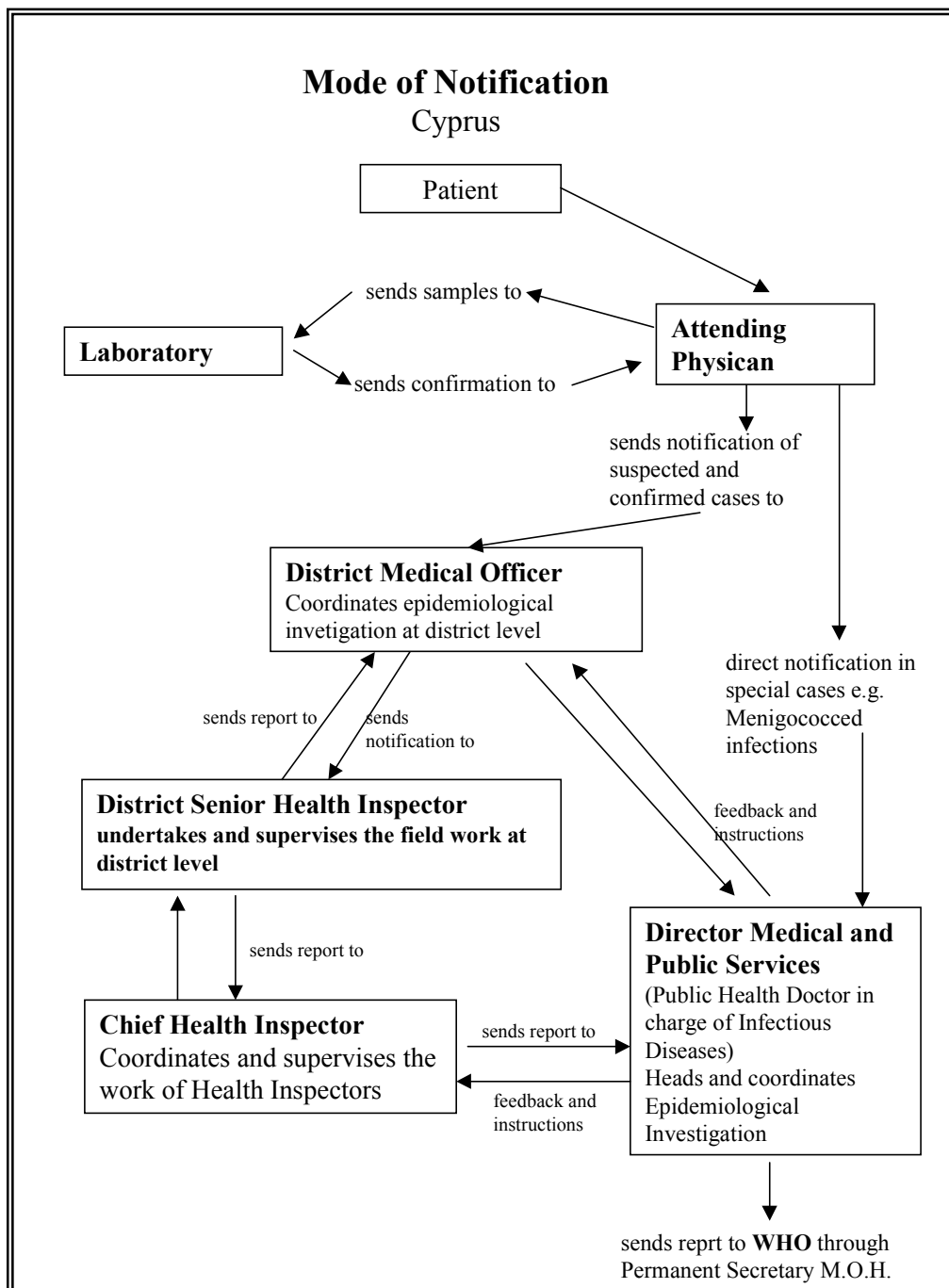
*The designations and the presentation of material on this map of the Member States of the WHO European Region (as at 31 July 1997) do not imply the expression of any opinion whatsoever on the part of the World Health Organization concerning the legal status of any country, territory, city or area or of its authorities, or concerning the delimitation of its frontiers or boundaries. Dotted lines represent approximate border lines for which there may not yet be full agreement.*

### 1. General information

The main source of data on foodborne diseases is the notification system. Twenty-six communicable diseases including cholera, dysentery, typhoid fever (all forms), infectious hepatitis A and food poisoning are notified in Cyprus under the Quarantine Law.

Notification of Foodborne Diseases by the attending physician is usually followed by laboratory confirmation of the infection. In this way, it is not possible to secure prompt action which would allow proper investigation and control of disease.

Figure CY 1



**WHO Surveillance Programme for Control of Foodborne Infections and Intoxications in Europe**  
**7th Report**

Country Reports: *CYPRUS 1993 – 1998*

---

**2. Statutory notification**

Table CY 1

**Statutorily notified cases of gastrointestinal diseases**  
**CYPRUS 1993 - 1998**

<b>Disease</b>	<b>1993</b>	<b>1994</b>	<b>1995</b>	<b>1996</b>	<b>1997</b>	<b>1998</b>
Typhoid and paratyphoid	8	4	3	3	3	6
<i>Incidence rate</i>	1.11	0.55	0.41	0.41	0.40	0.80
Dysentery	-	-	2	-	-	-
<i>Incidence rate</i>			0.27			
Salmonellosis	111	76	57	52	75	148
<i>Incidence rate</i>	15.46	10.47	7.78	7.05	1.00	19.77
Hepatitis A	3	-	2	3	6	11
<i>Incidence rate</i>	0.42	1.44	0.27	0.41	0.81	1.47

**3. Epidemiologically investigated incidents**

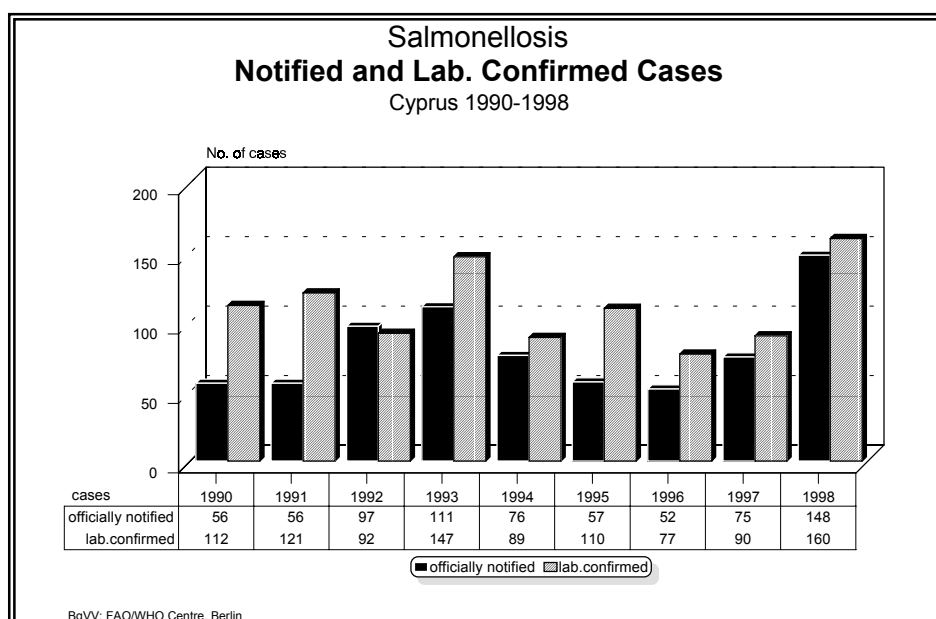
**3.1 Salmonellosis**

Table CY 2

**Salmonellosis cases**  
**investigated at the Nicosia Medical Laboratory**  
**CYPRUS 1993 - 1998**

	<b>Year</b>					
	<b>1993</b>	<b>1994</b>	<b>1995</b>	<b>1996</b>	<b>1997</b>	<b>1998</b>
Salmonellosis	147	89	110	77	90	160
<i>Incidence rate</i>	20.48	12.26	15.01	10.43	12.11	21.37

Figure CY 2



### 3.1.1 Salmonella serotypes

Table CY 4

**Salmonella cases by serotypes\***  
CYPRUS 1993 - 1998

	1993	1994	1995	1996	1997	1998
<i>S. Enteritidis</i>	91	64	59	54	35	50
<i>S. Typhimurium</i>	18	20	23	14	46	41
<i>S. Infantis</i>	14	20	20	20	17	32
<i>S. Newport</i>	-	7	9	8	1	27
Other	-	-	-	-	-	10

\* data available only from Nicosia and Larnaca General Hospitals

### 3.1.2 Salmonella/age groups affected

Table CY 5

**Salmonella cases distribution by age groups**  
CYPRUS 1997 - 1998

Year	0-11m.	1-4	5-9	10-14	15-19	20-24	25-34	35-44	45-54	55-64	65+	not spec.	Total
1997	13	29	6	2	1	3	8	2	5	1	1	4	75
1998	16	43	27	10	7	6	9	10	2	2	8	8	148

**WHO Surveillance Programme for Control of Foodborne Infections and Intoxications in Europe**  
**7th Report**

Country Reports: *CYPRUS 1993 – 1998*

**3.1.3 Salmonella/seasonal distribution**

Table CY 6

**Salmonella cases distribution by month**  
**CYPRUS 1993-1998**

Year	Month												Total
	1	2	3	4	5	6	7	8	9	10	11	12	
1993	2	2	3	3	13	14	16	16	13	13	14	2	<b>111</b>
1994	0	4	2	3	4	8	23	16	5	4	4	3	<b>76</b>
1995	2	0	3	2	4	13	12	10	6	4	0	1	<b>57</b>
1996	1	6	5	1	7	2	8	7	3	8	2	2	<b>52</b>
1997	5	1	1	2	4	6	12	9	15	6	7	7	<b>75</b>
1998	1	0	1	3	17	19	22	35	28	8	8	6	<b>148</b>

**3.2 Foodborne disease outbreaks**

**3.2.1 Foods involved**

Table CY 7

**Food/vehicle involved in foodborne disease outbreaks**  
**CYPRUS 1993 - 1998**

Food	Year						
	1993	1994	1995	1996	1997	1998	1993 - 1998
Milk/Cheese	2	2	5	4	2	-	<b>15</b>
Meats (chicken)	-	-	1	-	-	4	<b>5</b>
Desserts/cakes	4	2	-	3	2	2	<b>13</b>
Mayonnaise, dressings	-	1	-	-	-	-	<b>1</b>
Fruit/Vegetables	-	1	-	-	-	-	<b>1</b>
Ready-to-serve-meals	1	3	3	-	-	-	<b>7</b>
Eggs	-	-	-	-	-	3	<b>3</b>
<b>Total</b>	<b>7</b>	<b>9</b>	<b>9</b>	<b>7</b>	<b>4</b>	<b>9</b>	<b>45</b>

**WHO Surveillance Programme for Control of Foodborne Infections and Intoxications in Europe**  
**7th Report**

Country Reports: *CYPRUS 1993 – 1998*

---

3.2.2 Place where incident occurred

Table CY 8

**Salmonella cases By place where food was eaten or acquired**  
CYPRUS 1998

Place	No.	%
Private home	95	64.2
Restaurant/hotel	7	4.7
Other places	15	10.2
Two and more places	13	8.8
Unknown	18	12.2
<b>Total</b>	<b>148</b>	<b>100</b>

**4. Additional information**

Table CY 9

**Foodborne diseases investigated at the State General Laboratory**  
CYPRUS 1992 - 1997

Year	No. of samples submitted for investigation	No of samples positive for pathogens	Pathogens detected			
			<i>Salmonella</i>	<i>B.cereus</i>	<i>S.aureus</i>	<i>E.coli</i>
1992	6	2	2	-	-	-
1993	58	8	5	-	3	-
1994	39	9	2	-	5	2
1995	46	9	-	1	7	1
1996	87	7	3	-	4	-
1997	33	4	2	-	2	-
<b>Total</b>	<b>269</b>	<b>38</b>	<b>14</b>	<b>1</b>	<b>21</b>	<b>3</b>