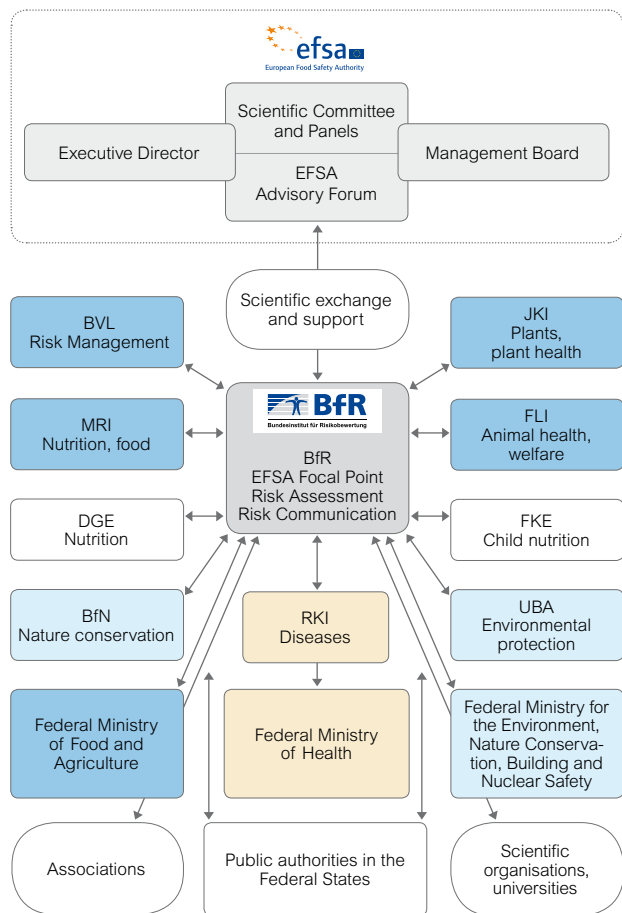


this kind. As the coordination point, the BfR has built up a network of representatives from public institutions, science, trade and industry, politics and consumer associations in Germany which supports the EFSA in the tasks it performs for the EU. The goal of these activities is to make even more intensive use of the existing European knowledge of the health risks of food, thereby ensuring food safety in Europe on the highest possible scientific level.



Network of the German EFSA Focal Point

BfR Committees

The BfR is advised by 15 committees in its scientific work for the German government and European boards concerning the safety of food and products. As a network of experts, these committees, which orientate themselves on the EFSA committee structure in the main, constitute an important cornerstone for the collaboration of the German Focal Point with the EFSA.

Publication of the “EU Food Safety Almanac”

The “EU Food Safety Almanac” published by the BfR provides an overview of the European institutions and state authorities responsible for the safety of food and feed in each of the 28 Member States of the EU and the associated countries of Iceland, Norway and Switzerland, as well as candidate countries. In the brochure, the essential authorities and expert commissions are presented briefly and clearly in country profiles, along with their functions within the state legal system. The EU Almanac is available in several language versions on the BfR website and can be downloaded or ordered directly from the BfR free of charge.

Contact

Federal Institute for Risk Assessment
EFSA Focal Point
 Max-Dohrn-Straße 8–10
 D-10589 Berlin
 Phone +49 30 18412-2103
 Fax +49 30 18412-1243
 efsa-focal-point@bfr.bund.de

FEDERAL INSTITUTE FOR RISK ASSESSMENT

BfR – EFSA Focal Point

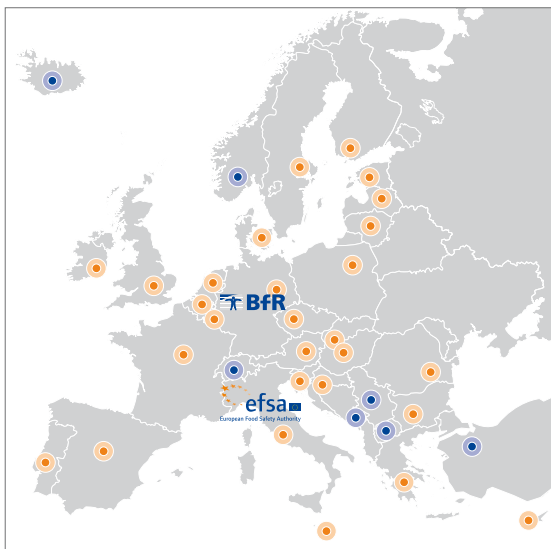


The Federal Institute for Risk Assessment as an EFSA Focal Point

The European Food Safety Authority (EFSA) has initiated the set-up of national contact points in the Member States to act as an interface between the EFSA and the various national authorities for food and feed safety, animal and plant health, as well as research institutes, consumers and other interest groups connected with the EFSA.



In Germany, the Federal Institute for Risk Assessment (BfR) has been appointed by the Federal Ministry of Food and Agriculture (BMEL) to serve as the “EFSA Focal Point” for this scientific coordination work.



EFSA Focal Points in Europe (red spot: Member States, blue spot: associated states and candidate countries)

BfR

The BfR performs essential tasks in the field of consumer health protection. It identifies possible risks, assesses them using scientific criteria independent of any economic, political or social interests and proposes measures to minimise them. The BfR has the task of performing research and informing consumers about possible recognised and assessed risks connected with food, substances and consumer products.

EFSA

In the field of food and feed safety, the EFSA is the linchpin of risk assessment in the European Union (EU). It has its headquarters in Parma (Italy). The EFSA is managed by an independent management board whose appointed members should act in the public interest and should not represent a government, an organisation or a sector of trade and industry. The executive director of the EFSA is the authority's legal representative and he/she receives advice from the advisory forum whose members come from all 28 EU Member States. The President of the BfR is the German member of the EFSA advisory forum. The EFSA provides independent scientific advice in close cooperation with national authorities and in an open exchange with the affected interest groups. The Scientific Committee and ten specialised panels are responsible for the preparation of EFSA's scientific opinions, statements and guidelines.

Mediator between authorities and institutions

As the national coordination point in Germany, the BfR is the important mediator between the EFSA and the federal ministries with responsibility in each respective area: the Federal Ministry of Food and Agriculture (BMEL), the Federal Ministry of Health (BMG) and the Federal Ministry for the Environment, Nature Conserva-

tion, Building and Nuclear Safety (BMUB). Institutions within the portfolios of these ministries are actively involved to the same extent along with publicly funded institutions covered by the EFSA remit:

- ▶ Federal Agency for Nature Conservation (BfN)
- ▶ Federal Office of Consumer Protection and Food Safety (BVL)
- ▶ German Nutrition Society (DGE)
- ▶ Research Institute of Child Nutrition (FKE)
- ▶ Friedrich-Loeffler-Institut (FLI)
- ▶ Julius Kühn-Institut (JKI)
- ▶ Max Rubner-Institut (MRI)
- ▶ Robert Koch Institute (RKI)
- ▶ Federal Environment Agency (UBA)

The Focal Point also maintains contact with the ministries responsible for monitoring measures in consumer protection on a regional level.

Exchange of scientific information and networks

As the coordination point, the BfR ensures that the exchange of scientific information about initiatives, current processes, research projects and the results of risk assessments of foods and feeds takes place directly. The EFSA has set up an electronic Information Exchange Platform (IEP) to support the exchange of information. Every year, the EFSA organises several joint meetings with representatives of the European Focal Points. The contact points report regularly to the EFSA about their activities which are summarised in an annual report (Focal Point Activities) published by the EFSA. The EFSA Focal Point coordinates the requests for scientific opinions from Germany and forwards them to the EFSA.

In cases in which the EFSA holds a different opinion in the assessment of a risk than the responsible institutions in Germany, it is the task of the Focal Point to contribute towards the clarification of divergences of