

XProductNotification

**XML Data Exchange Format
for Notifications of Products
to BfR**

Including CLP

**Using Excel for Acquisition
of Product Data
to Generate
an XML File**

- User Manual -

Table of Contents

1 Introduction	3
2 General structure of the Excel file, XProductNotification_BfR.xls	4
3 Recording of products	4
3.1 Product rows, continuation rows, blank rows	4
3.2 How is the linkage established between the four worksheets?	5
3.3 What kind of data is recorded?	5
3.4 Rules for the “Manufacturer/Distributor” entry	8
3.5 Rules for entering the “Type of Notification”	8
3.6 Rules for specifying “Detergent/Cleaner”	8
3.7 Special rules for entering the formulation data	8
3.8 Rules for entering the concentration data	9
3.9 Rules for entering pH values	10
3.10 Labelling: Valid R, S, H, P and EUH Phrases/Statements and Phrases/Statements with variable texts	11
4 Generation of the XML file and its submission to BfR	12
5 Visual accentuation of products	12
6 Synoptic view of error messages displayed during the checking procedure	13

1 Introduction

For notification of products in electronic form, the definition of a data exchange format is required.

The XML format has become established as a standard for data exchange. Therefore, BfR has defined a format based on XML which is referred to as XProductNotification.

This format has been described in the following document under the name

XProductNotification_Data_Exchange_Format.pdf

The format has been defined in the XML schema **XProductNotification.xsd**.

To support the generation of notifications of products in this XML format, BfR has developed the Excel entry assistant

XProductNotification_BfR.xls

This file will assist users and enable

- a comfortable recording of the product data and
- generating, at the push of a button, an XML file from the product data recorded, which is to be submitted to BfR.

The procedure requires Excel 97 or higher.

Prior to the generation of the XML file, the completeness and correctness of the data entered will be checked by a comprehensive set of rules.

Both checking of the data entered and generation of the XML data will be performed by means of a macro.

Therefore, the running of macros should be allowed.

For an example of a notification of a product, see the file

XProductNotification_BfR_example.xls

The file name “XProductNotification_BfR_example.xml” stands for the XML file generated by the macro from this sample notification.

2 General structure of the Excel file, XProductNotification_BfR.xls

The Excel file comprises a total of eight worksheets.

- Four worksheets for recording the product data
“Notification Part 1”, “Notification Part 2”, “Notification Part 3” and “Notification Part 4”;
- Two worksheets providing catalogs for the pick lists
“Catalogs” and “Catalogs_variable_texts” (read only); and
- Two worksheets providing instructions,
“Instructions” and “Enable macros” (read only)

3 Recording of products

The number of product data notified to BfR may be very high (only a minor part of these data is required). Therefore, data recording has been apportioned to four worksheets.

3.1 Product rows, continuation rows, blank rows

To enable checking of the data entered and output as an XML file, two questions must be answered:

1. Where does the next product start on the worksheet?
2. Where does the product name appear on the other worksheets?

For assigning the information to the products, the following rules shall apply:

The 1st row of a product is referred to as the **product row**. It should always display the serial number (Ser.No.) and the product name. Any product information stated only once should always appear in the product row.

Any row where the Ser.No. column is empty or the Ser.No. remains unchanged will be regarded as a **continuation row** on the product. A classic example is represented by the formulation. A product whose formulation contains five substances will require one product row and four continuation rows.

As a rule, both the Ser.No. column and the Product Name column will remain empty in a **continuation row**. However, it is also possible to repeat the Ser.No. and the product name or the Ser.No. only in the following rows, which in this case will also constitute continuation rows.

Blank rows may occur anywhere and will improve legibility.

3.2 How is the linkage established between the four worksheets?

The link between the four worksheets consists in the combination of the Ser.No. and the product name. All four worksheets will contain required data. Therefore, each product listed in the “Notification Part 1” worksheet should also appear on the other three worksheets. Compliance with these rules will be checked, and in the case of failure, an error message will be displayed.

3.3 What kind of data is recorded?

The following table lists the individual worksheets and the data to be recorded on each of these, also indicating which data are required.

Worksheet	Field	Required field	Multiple entries per product
Notification Part 1	Ser.No.	x	No
	Product Name	x	No
	Manufacturer	1 manufacturer or at least 1 distributor	No
	Distributor	1 manufacturer or at least 1 distributor	Yes
	Type of Notification	x	No
	Detergent/Cleaner		No
	Formulation		
	Substance Name (chemical/IUPAC)	x	Yes
	CAS-No.		Yes
	Concentration	x	Yes
	Nanoparticles		Yes
	R Phrases		Yes
	H/EUH Statements		Yes
	Texts of variable H/EUH Statements		Yes
	Substance SD Sheet (Safety Data Sheet)		Yes
Notification Part 2	Ser.No.	x	
	Product Name	x	
	Labelling of the Product under the GefStoffV (Gefahrstoffverordnung - German Regulations on Dangerous	Required: Either “Labelling under the	

Worksheet	Field	Required field	Multiple entries per product
	Substances and Materials)	GefStoffV” or “Labelling under the CLP”, also both may be entered	
	Hazard Symbols	x	Yes
	R Phrases	x	Yes
	S Phrases	x	Yes
	Texts of variable S Phrases		
	Labelling of the Product under the CLP	Required: Either „Labelling under the GefStoffV” or “Labelling under the CLP”, also both may be entered	
	Signal Word	x	No
	Hazard Pictograms	x	Yes
	Hazard Statements	x	Yes
	Texts of variable H Statements		Yes
	Precautionary Statements	x	Yes
	Texts of Variable P Statements		Yes
	Supplemental Hazard Information (EUH Statements)		Yes
	Texts of variable EUH Statements		Yes
	CLP Classification Category		Yes
Notification Part 3	Ser.No.	x	
	Product Name	x	
	Field of Application	x	No
	Intended Use	x	No
	Biocide Category	Required for notification type "Biocide Notification"	Yes
	Biocide Main Group	x	yes
	Biocide Product Type		Yes
	Biocide Product Type Subgroup		Yes
	Category of Use		Yes

Worksheet	Field	Required field	Multiple entries per product
	(for detergents and cleaners)		
	Level 1		Yes
	Level 2		Yes
Notification Part 4	Ser.No.	x	
	Product Name	x	
	Packaging		
	Packaging	x	No
	Child-Resistant Fastening		No
	Tactile Warning of Danger		No
	Propellant Spray		No
	Pump spray		No
	Sprayer Closure		No
	Dropper Closure		No
	Push-Pull Closure		No
	Marketing		
	Marketed from		No
	Marketed until		No
	pH Values		
	pH Value		Yes
	pH Value Remark		Yes
	Product Identification		
	Article Number		Yes
	BAuA Number Federal Institute for Occupational Safety and Health (BAuA)		Yes
	EAN Code		Yes
	PI Element		Yes
	Other Product Identification		Yes
	Further Information on the Product		
	Consistency		No
	Colour		No
	Additional Labelling		No
	Reactions Hazardous for Consumers		No
	Product SD Sheet		No
	Label		Yes
	Remark		No

3.4 Rules for the “Manufacturer/Distributor” entry

It is required to enter at least one manufacturer or distributor. Alternatively, it is also possible to enter one manufacturer and one or more distributors. Manufacturer and distributor are identified by means of a BfR company code. The latter has to be applied for with BfR in advance. The BfR company code consists of a number of no more than five digits. Leading zeros may be omitted when entering data.

3.5 Rules for entering the “Type of Notification”

The specification refers to the legal basis of the product notification sent to BfR.

Possible options include:

- Notifiable under §16e – Notification under the German Chemicals Act (ChemG), applies to all preparations
- Biocide Notification – applies to all biocidal products
- Detergent Notification - Notification under the German Detergents and Cleaning Agents Act (Wasch- und Reinigungsmittelgesetz - WRMG), applies to all detergents and cleaners, unless notifiable under §16e Chemicals Act, or as a biocide
- Voluntary Notification – no legal obligation to notify

3.6 Rules for specifying “Detergent/Cleaner”

If a product notification constitutes a notification under §16e of the Chemicals Act, or a biocide notification and the product is also a detergent or cleaner, "Yes" should be chosen from the pick list.

3.7 Special rules for entering the formulation data

Required data on the formulation include the name of the substance and its concentration. Each substance should be entered in a new row.

For a single substance, more than one CAS number may be stated. Commas should be used to separate the different CAS numbers.

A CAS number consists of three parts: two groups of digits and a single digit separated by hyphens. The first part of the CAS number may be up to 7 digits long, the second part consists of 2 digits, and the single digit after the second hyphen is a check digit.

Examples:	Water	CAS No.: 7732-18-5
	Ethanol	CAS No.: 64-17-5

For each substance, R Phrases and/or H/EUH Statements may be entered. In order to keep the record clear and simple, several R Phrases and/or H/EUH Statements for one and the same substance should be entered in the corresponding column, separated by commas.

For R Phrases and H Statements, the letters R or H may be omitted. For EUH Statements, “EUH” should precede the number in order to avoid the number being interpreted as an H Statement.

If you have indicated one or more H/EUH Statements with variable text, the corresponding texts should be entered in the column “Texts of Variable H/EUH Statements” according to the following rule:

H<number>:text

EUH<number>:text

Each H Statement should be entered starting with the letter “H”, each EUH Statement, with the letters “EUH”. The number is followed by a colon and the text.

The end of the text is recognized by finding the start of the next H or EUH Statement.

For more information on entering H/EUH Statements with variable text, see also Chapter 3.10.

If a component of the formulation is present in the form of nanoparticles, “Yes” has to be chosen from the pick list in the column “Nanoparticles”.

A safety data sheet (SDS) may be submitted for each component. In the “Substance SDS” column, the file name should be entered in the corresponding row. This file has to be submitted to BfR together with the XML file.

3.8 Rules for entering the concentration data

The concentration data may be entered in different ways as follows:

- | | <u>Example:</u> |
|---|--|
| • Defined value | 12.3
12.3% |
| • Defined value preceded by a qualifier | < 0.1
<= 0.1
> 10
>= 10
approx. 0.3 |
| • Indication of a range | 12.3 – 12.7
12.3 - <12.7
approx. 12.3 – 12.7 |
| • Completed to 100 % | ad 100 |

Qualifiers that may precede a defined value and will mostly result in the given value to become unsharp, include:

- <
- <=
- =
- >

- >=
- approx.

Indications of ranges may include a qualifier preceding the “from” value and/or the “to” value. Admissible signs include:

Qualifiers preceding the “from” value

>
>=
approx.

Qualifiers preceding the “to” value

<
<=
=
approx.

A valid entry indicating the concentration will consist of the admissible signs for the qualifiers, numerals and a decimal separator, or the indication “ad 100”.

The decimal separator can be a point or a comma, depending on the selected “Regional and Language Options” on your PC.

Using an invalid decimal separator will produce an error message.

For indicating ranges, the entry should include a minus sign between the “from” and the “to” value.

The values and the minus sign may be separated by any number of blanks.

Figures indicating the concentration must always be greater than 0, the possible maximum being 100 %.

The percent sign may be used.

3.9 Rules for entering pH values

The pH values may be expressed as follows:

- Defined value
- Defined value preceded by a qualifier
- Indication of range

Example:

4.2
< 4.2
> 4.2
approx. 4.2
1.4 – 2.4
12.3 – 12.7

Qualifiers that may precede a value and will mostly result in the given value to become unsharp, include:

- <
- <=
- =
- >
- >=
- approx.

If a range is given, no qualifier should be used.

A valid pH entry will consist of the admissible qualifier sign, numerals and a dot as a decimal separator.

Using a comma as decimal separator will produce an error message.

To indicate ranges, the entry should include a minus sign between the “from” and the “to” value.

The values and the minus sign may be separated by any number of blanks.

The pH value has to be in a range between -14 and +14. Negative pH values should be indicated by a minus sign before the figure.

3.10 Labelling: Valid R, S, H, P and EUH Phrases/Statements and Phrases/Statements with variable texts

You can find valid R, S, H, P and EUH Phrases/Statements on worksheet “Catalogs”. In addition you can combine P Statements(i.e. 303+334).

The entries for “Labelling under the GefStoffV” and “Labelling under the CLP” of a substance/product involve a special feature: There are S Phrases as well as H, P and EUH Statements that need to be completed because their texts may vary.

For example, S14 reads:

“Keep away from ... (incompatible materials to be indicated by the manufacturer)”

This is an S Phrase with “variable text“. When entering S14, you are required to complete the text of this S Phrase accordingly.

For example: “Keep away from acids.”

The text of such a phrase may be copied from the worksheet “Catalogs_variable_texts” and pasted in the corresponding place (<Text> or ...) for the variable text.

Failure to complete the variable text for an S Phrase containing a variable text part will not necessarily result in an error message. For your support, standard texts have been stored for many S Phrases which will be used in such cases.

The worksheet “Catalogs_variable_texts” lists all S Phrases containing variable text. On this sheet, also standard texts have been stored where possible and meaningful.

For example, if S27/28 has been entered without completing the variable text part, the standard text provided will read

“After contact with skin, take off immediately all contaminated clothing and wash immediately with plenty of water and soap.”

If S27/28 has been completed by your own text, the standard text will be ignored.

All explanations given above for S Phrases analogously apply to H, P and EUH Statements.

4 Generation of the XML file and its submission to BfR

All four worksheets for recording the product data will show a large “Generate Product Notification” button located top left.

Clicking this button will result in the following steps being performed:

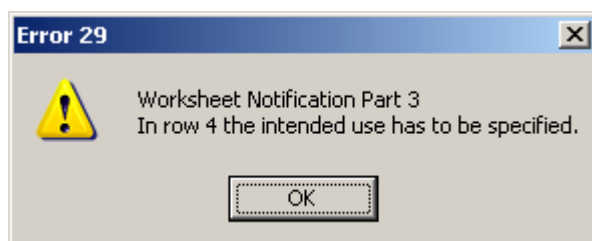
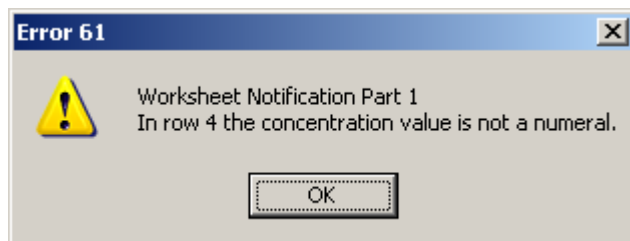
1. The data entered will be checked.
2. If everything is correct, the notifier’s BfR company code is requested.
3. You will be asked to state the location and name of the XML file.
4. The XML file is generated.

This XML file (not the Excel file) is submitted to BfR by email, on floppy disk or on CD/DVD.

An XML file is only created if no error is found during the checking procedure. This means that any error detected will need to be corrected.

Any error message will state the worksheet, row and column where the error has been detected. The focus will move to the corresponding cell.

Examples:



5 Visual accentuation of products

In order to improve legibility of product names, clicking on the button



, which is found on all four worksheets, will accentuate in grey colour the 1st row of a product on all worksheets. Another click on this button will remove the accentuation.

6 Synoptic view of error messages displayed during the checking procedure

Below, all error messages that may appear during the check of the data entered are listed, inclusive of instructions for correction.

Error messages are displayed in a small window. The title bar of this window will read “Error <number>”.

The numbers are found in the table shown below.

Explanations of error messages:

Worksheet <s>	<s> is the placeholder for the concrete name of the worksheet It will read "Notification Part 1" or "Notification Part 2", or ...
Row <r>	<r> is the placeholder for the row number
Row <rp>	<rp> is the placeholder for the row number of the 1 st row of the product
Column <c>	<c> is the placeholder for the column letter
Product Name <productname>	<productname> is the placeholder for the concrete product name
Ser.No. <serno>	<serno> is the placeholder for the concrete Ser.No.
<x>	<x> is the placeholder for a defined value

No.	Error message	Remedy
1	Worksheet <s> In row <r>, the product name has changed but the Ser.No. remained unchanged.	In row <r>, the same Ser.No. has been entered as in the row above although the product name has changed. Starting entries for a new product requires a new Ser.No. If you don't want to start entering data on a new product, you should delete both the Ser.No. and product name.
2	Worksheet <s> In row <r>, the Ser.No. changes but a product name is missing.	In row <r>, a new Ser.No. has been entered but a product name is missing. Starting the entries for a new product requires entering of the product name. If you don't want to start entering data on a new product, delete the Ser.No.
3	Worksheet <s> In row <r>, a product name exists but the Ser.No. is missing.	You forgot to enter the Ser.No. in row <r>. Starting entries for a new product requires entering of the Ser.No. If you don't want to start entering data on a new product, delete the product name.

No.	Error message	Remedy
4	Worksheet "Notification Part 1" In row <r>, the names of both distributor and substance are missing, so that this row is interpreted as a blank row. All other columns should be empty as well since otherwise, the information entered will get lost. Please delete the entry in column <c> or move it to the product row.	Delete the data in row <r>, column <c> and enter 1 st product row.
5	Worksheet "Notification Part 1" In row <r>, the formulation is missing for the product <productname>.	No formulation has been stated. However, the formulation is a required entry.
6	Worksheet "Notification Part 1" In row <r>, a Ser.No. has to be entered.	Starting of entries for a new product requires entering a new Ser.No.
7	Worksheet "Notification Part 1" In row <r>, the BfR company code of at least one company has to be entered.	Stating the name of the manufacturer or at least one distributor is required. Any number of distributors may be stated.
8	Worksheet "Notification Part 1" In row <r>, the Type of Notification has to be entered.	"Type of Notification" is a required entry.
9	Worksheet "Notification Part 1" In row <r>, columns C, E and F must be left empty since these data may be entered only once per product. Please delete entry in column <c>.	Multiple data on one product have been entered although no more than one entry is possible. Delete the entry in the cell specified.
10	Worksheet "Notification Part 1" In row <r>, the name of a manufacturer has been stated which is missing in the first row of the product (row <rp>). Please enter the manufacturer in the product row (first row for product).	Please enter the manufacturer's name in the first row of the product <rp>.
11	Worksheet "Notification Part 1" In row <r>, a distributor has been stated which is missing in the first row of the product (row <rp>). Please enter the distributor's name in the product row (first row for product).	Please enter the distributor's name in the first row of the product <rp>.
12	Worksheet "Notification Part 1" In row <r>, the CAS Number does not comply with the format "9...99-99-9"	Please enter a correct CAS No.
13	Worksheet "Notification Part 1" In row <r>, the data on the concentration is missing.	Please enter data on the concentration.
14	Worksheet "Notification Part 1" In row <r>, no H Statements have been	Please delete the entry in column M or modify the H Statement, if applicable.

No.	Error message	Remedy
	entered. Therefore, column M for variable texts should be empty as well.	
15	Worksheet "Notification Part 1" In row <r>, a component is stated but a substance name missing. All other columns should be empty as well since otherwise, the information will become lost. Please delete the entries in column <c> or enter a substance name.	Although no substance name has been entered, a value exists in another column. Please check whether a substance name has to be added, or simply delete the entry in the corresponding cell.
16	Worksheet "Notification Part 2" In row <r>, the labelling entry is missing for the product. "Labelling under the GefStoffV" or "Labelling under the CLP" are required entries. At least one of the two blocks must be completed in full. "Completed in full" means that at least one value or "None" is entered in each column.	"Labelling under the GefStoffV" or "Labelling under the CLP" are required entries for each product. At least one of the two blocks must be completed in full.
17	Worksheet "Notification Part 2" For the product in row<r>, the entry "None" for the hazard symbols must not be combined with other data.	Entering of one or more hazard symbols will exclude "None" as an entry.
18	Worksheet "Notification Part 2" For the product in row<r>, the entry "None" for the R Phrases must not be combined with other data.	Entering of one or more R Phrases will exclude "None" as an entry.
19	Worksheet "Notification Part 2" For the product in row<r>, the entry "None" for the S Phrases must not be combined with other data.	Entering of one or more S Phrases will exclude "None" as an entry.
20	Worksheet "Notification Part 2" For the product in row<r>, more than a single permissible signal word has been entered.	Please enter only one signal word.
21	Worksheet "Notification Part 2" For the product in row<r>, the entry "None" for the hazard pictograms must not be combined with other data.	Entering of one or more hazard pictograms will exclude "None" as an entry.
22	Worksheet "Notification Part 2" For the product in row<r>, the entry "None" for the H Statements must not be combined with other data.	Entering of one or more H Statements will exclude "None" as an entry.
23	Worksheet "Notification Part 2"	Entering of one or more P Statements will

No.	Error message	Remedy
	For the product in row<r>, the entry “None” for the P Statements must not be combined with other data.	exclude “None” as an entry.
24	Worksheet "Notification Part 2" For the product in row<r>, the entry “None” for the EUH Statements must not be combined with other data.	Entering of one or more EUH Statements will exclude “None” as an entry.
25	Worksheet <s> The information in row <r>, column <c>, should appear in the 1 st row of this product entry (row <rp>). Please enter the information in the 1 st product row <rp> or delete it.	All multiple entries should start in the product row. An entry exists in row <r> of the respective column, but this column is empty in the product row <rp>.
26	Worksheet <s> The Ser.No. is missing for the product in row <r>. The Ser.No. and the product name are required to establish the link between the four worksheets.	Please enter the Ser.No. in row <r>.
27	Worksheet "Notification Part 3" The biocide category is missing for product in row <r>. The biocide category is a required entry for products of notification type “Biocide Notification”.	Please enter the “Biocide Category” (required) or change the type of notification on the worksheet “Notification Part 1”.
28	Worksheet "Notification Part 3" In row <r>, the field of application has to be specified.	Please enter the required information.
29	Worksheet "Notification Part 3" In row <r>, the intended use has to be specified.	Please enter the required information.
30	Worksheet "Notification Part 3" The product in row<r> was not found on worksheet “Notification Part 1”.	A combination of Ser.No. and product name appears on the worksheet "Notification Part 3" which is missing on the worksheet “Notification Part 1”. Please harmonize the two worksheets to display the same combination of Ser.No. and product name.
31	Worksheet "Notification Part 4" In row <r>, the packaging has to be specified.	Please enter the required packaging information.
32	Worksheet "Notification Part 4" In row <r>, no valid date (dd/mm/yyyy) has been entered under “Marketed from”.	The date entry is incorrect. A valid entry will read e.g. 01/01/2003
33	Worksheet "Notification Part 4"	The date entry is incorrect.

No.	Error message	Remedy
	In row <r>, no valid date (dd/mm/yyyy) has been entered under “Marketed until”.	A valid entry will read e.g. 31/12/2012
34	On worksheet <s>, the entries are missing for the product listed under Ser.No. <serno>, Product Name <productname>.	On worksheet “Notification Part 1”, a product is listed which is missing on worksheet <s>.
35	The product under Ser.No. <serno>, product name <productname> listed on worksheet <s> is missing on worksheet “Notification Part 1”. Please correct your entries.	On worksheet <s>, a product is listed which is missing on worksheet “Notification Part 1”. Please harmonize the two worksheets.
36	Worksheet "Notification Part 1" In row <r>, the concentration “from” value is expressed using a comma (dot) as a decimal separator. Please use a decimal dot (comma) instead.	The concentration should be expressed using a decimal separator corresponding to the selected "Regional and Language Options" on your PC.
37	Worksheet "Notification Part 4" In row <r>, the pH value is expressed using a comma (dot) as a decimal separator. Please use a decimal dot (comma) instead.	The pH value should be expressed using a decimal separator corresponding to the selected “Regional and Language Options” on your PC.
38	Worksheet "Notification Part 1" In row <r>, the concentration “from” value specified is less than 0.	Negative values are not allowed to specify the concentration.
39	Worksheet "Notification Part 1" In row <r>, the concentration “from” value specified is greater than 100.	The maximum concentration of a substance in a formulation possible is 100 %.
40	Worksheet "Notification Part 4" In row <r>, the pH “from” value specified is less than -14.	The pH value may only be within a range between -14 and 14.
41	Worksheet "Notification Part 4" In row <r>, the pH “from” value specified is greater than 14.	The pH value may only be within a range between -14 and 14.
42	Worksheet "Notification Part 1" In row <r>, the concentration “from” value specified is not a numeral.	To indicate the concentration, only numerals and a decimal dot are allowed.
43	Worksheet "Notification Part 4" In row <r>, the pH “from” value specified is not a numeral.	To indicate the pH value, only numerals and a decimal dot are allowed.
44	Worksheet "Notification Part 4" In row <r>, only a minus sign is allowed between the pH “from” and “to” values. Please delete <x>.	Please correct the pH value accordingly. No qualifier is allowed to precede the “to” value (see Chapter 3.9).
45	Worksheet "Notification Part 4" In row <r>, the pH “to” value is expressed using a comma (dot) as a decimal	The pH value should be expressed using a decimal separator corresponding to the selected “Regional and Language Options” on

No.	Error message	Remedy
	separator. Please use a decimal dot (comma) instead.	your PC.
46	Worksheet "Notification Part 1" In row <r>, the concentration "to" value is expressed using a comma (dot) as a decimal separator. Please use a decimal dot (comma) instead.	The concentration should be expressed using a decimal separator corresponding to the selected "Regional and Language Options" on your PC.
47	Worksheet "Notification Part 1" In row <r>, the concentration "to" value is lower than the "from" value.	This is no valid range. The "from" value must always be lower than the "to" value.
48	Worksheet "Notification Part 4" In row <r>, the pH "to" value is lower than the "from" value.	This entry is not considered as a valid range. The "from" value must always be lower than the "to" value.
49	Worksheet "Notification Part 1" In row <r>, the concentration "to" value is less than 0.	A concentration value cannot be negative.
50	Worksheet "Notification Part 1" In row <r>, the concentration "to" value is greater than 100.	The maximum concentration of a substance in a formulation possible is 100 %.
51	Worksheet "Notification Part 4" In row <r>, the pH "to" value specified is less than -14.	The pH value may only be in a range between -14 and 14.
52	Worksheet "Notification Part 4" In row <r>, the pH "to" value specified is greater than 14.	The pH value can only be in a range between -14 and 14.
53	Worksheet "Notification Part 1" In row <r>, the concentration "to" value is not a numeral.	To indicate the concentration, only numerals and a decimal dot are allowed. e.g. 12.3-12.5
54	Worksheet "Notification Part 4" In row <r>, the pH "to" value is not a numeral.	To indicate the pH value, only numerals and a decimal dot are allowed.
55	Worksheet "Notification Part 1" In row <r>, the concentration is expressed using a comma (dot) as a decimal separator. Please use a decimal dot (comma) instead.	The concentration should be expressed using a decimal separator corresponding to the selected "Regional and Language Options" on your PC.
56	Worksheet "Notification Part 4" In row <r>, the pH value is expressed using a comma (dot) as a decimal separator. Please use a decimal dot (comma) instead.	The pH value should be expressed using a decimal separator corresponding to the selected "Regional and Language Options" on your PC.
57	Worksheet "Notification Part 4" In row <r>, the pH value specified is less than -14.	The pH value can only be within a range between -14 and 14.
58	Worksheet "Notification Part 4"	The pH value may only be in a range between

No.	Error message	Remedy
	In row <r>, the pH value specified is greater than 14.	-14 and 14.
59	Worksheet "Notification Part 1" In row <r>, the concentration value is less than 0.	A concentration value cannot be negative.
60	Worksheet "Notification Part 1" In row <r>, the concentration value is greater than 100.	The maximum possible concentration of a substance in a formulation is 100 %.
61	Worksheet "Notification Part 1" In row <r>, the concentration value is not a numeral.	To indicate the concentration, only numerals and a decimal dot are allowed.
62	Worksheet "Notification Part 4" In row <r>, the pH value is not a numeral.	To indicate the pH value, only numerals and a decimal dot are allowed.
63	Worksheet "Notification Part 1" In row <r>, column <c>, the BfR company code is too long (no more than 5 digits).	A valid BfR company code consists of no more than 5 digits.
64	Worksheet "Notification Part 1" In row <r>, column <c>, the BfR company code is not a numeral.	A valid BfR company code consists of no more than 5 digits.
65	Worksheet "Notification Part 2" In row <r>, the invalid R Phrase <x> has been entered (only numerals and "None" are allowed). Valid R Phrases: See worksheet "Catalogs".	Please correct the R Phrase.
66	Worksheet "Notification Part 2" In row <r>, the invalid S Phrase <x> has been entered (only numerals and "None" are allowed). Valid S Phrases: See worksheet "Catalogs".	Please correct the S Phrase.
67	Worksheet "Notification Part 2" In row <r>, the invalid hazard symbol <x> has been entered. Valid hazard symbols: See worksheet "Catalogs".	Please correct the hazard symbol.
68	Worksheet "Notification Part 2" In row <r>, the invalid hazard pictogram <x> has been entered. Valid hazard pictograms: See worksheet "Catalogs".	Please correct the hazard pictogram.
69	Worksheet "Notification Part 2" In row <r>, the invalid H Statement <x> has been entered. Valid H Statements: See worksheet	Please correct the H Statement.

No.	Error message	Remedy
	"Catalogs".	
70	Worksheet "Notification Part 2" In row <r>, the invalid P Statement <x> has been entered. Valid P Statements: See worksheet "Catalogs".	Please correct the P Statement.
71	Worksheet "Notification Part 2" In row <r>, the invalid EUH Statement <x> has been entered. Valid EUH Statements: See worksheet "Catalogs".	Please correct the EUH Statement.
72	Worksheet "Notification Part 2" In row <r>, the invalid R Phrase <x> has been entered (only numerals and "None" are allowed). Only one R Phrase may be entered per row. Valid R Phrases: See worksheet "Catalogs".	Please correct the R Phrase.
73	Worksheet "Notification Part 2" In row <r>, the invalid S Phrase <x> has been entered (only numerals and "None" are allowed). Only one S Phrase may be entered per row. Valid S Phrases: See worksheet "Catalogs".	Please correct the S Phrase.
74	Worksheet "Notification Part 2" In row <r>, the invalid hazard symbol <x> has been entered. Only one hazard symbol may be entered per row. Valid hazard symbols: See worksheet "Catalogs".	Please correct the hazard symbol.
75	Worksheet "Notification Part 2" In row <r>, the invalid hazard pictogram <x> has been entered. Only one hazard pictogram may be entered per row. Valid hazard pictograms: See worksheet "Catalogs".	Please correct the hazard pictogram.
76	Worksheet "Notification Part 2" In row <r>, the invalid H Statement <x> has been entered. Only one H Statement may be entered per row.	Please correct the H Statement.

No.	Error message	Remedy
	Valid H Statements: See worksheet "Catalogs".	
77	Worksheet "Notification Part 2" In row <r>, the invalid P Statement <x> has been entered. Only one P Statement may be entered per row. Valid P Statements: See worksheet "Catalogs".	Please correct the P Statement.
78	Worksheet "Notification Part 2" In row <r>, the invalid EUH Statement <x> has been entered. Only one EUH Statement may be entered per row. Valid EUH Statements: See worksheet "Catalogs".	Please correct the EUH Statement.
79	Worksheet "Notification Part 2" In row <r>, a variable text has been entered for S Phrase <x> that needs to be completed.	You have entered a text with three dots. A concrete S Phrase text has to be entered in this place. The three dots are the placeholder for the variable part of an S Phrase text.
80	Worksheet <s> In row <r>, a variable text has been entered for H Statement <x> that needs to be completed.	You have entered a text containing angle brackets. A concrete H Statement text has to be entered in this place. Angle brackets stand for the variable part of an H Statement text.
81	Worksheet "Notification Part 2" In row <r>, a variable text has been entered for P Statement <x> that needs to be completed.	You have entered a text containing angle brackets. A concrete P Statement text has to be entered in this place. Angle brackets stand for the variable part of a P Statement text.
82	Worksheet "Notification Part 2" In row <r>, a variable text has been entered for EUH Statement <x> that needs to be completed.	You have entered a text containing angle brackets. A concrete EUH Statement text has to be entered in this place. Angle brackets stand for the variable part of a EUH Statement text.
83	Worksheet "Notification Part 2" In row <r>, the variable text required for S Phrase <x> is missing.	Please enter the complete S Phrase text.
84	Worksheet <s> In row <r>, the variable text required for H Statement <x> is missing.	Please enter the complete H Statement text.
85	Worksheet "Notification Part 2" In row <r>, the variable text required for P Statement <x> is missing.	Please enter the complete P Statement text.

No.	Error message	Remedy
86	Worksheet "Notification Part 2" In row <r>, the variable text required for EUH Statement <x> is missing.	Please enter the complete EUH Statement text.
87	Worksheet "Notification Part 2" In row <r>, a text has been entered for S Phrase <x> although there is no variable text in this S Phrase. Please delete the text.	Please delete S Phrase text.
88	Worksheet "Notification Part 2" In row <r>, a text has been entered for H Statement <x> although there is no variable text in this H Statement. Please delete the text.	Please delete H Statement text.
89	Worksheet "Notification Part 2" In row <r>, a text has been entered for P Statement <x> although there is no variable text in this P Statement. Please delete the text.	Please delete P Statement text.
90	Worksheet "Notification Part 2" In row <r>, a text has been entered for EUH Statement <x> although there is no variable text in this EUH Statement. Please delete the text.	Please delete EUH Statement text.
91	Worksheet "Notification Part 2" In row <r>, the invalid S Phrase <x> has been entered (only numerals and "None" are allowed). Valid S Phrases: See worksheet "Catalogs".	Please correct the S Phrase.
92	Worksheet "Notification Part 2" In row <r>, the invalid H Statement <x> has been entered. Valid H Statements: See worksheet "Catalogs".	Please correct the H Statement.
93	Worksheet "Notification Part 2" In row <r>, the invalid P Statement <x> has been entered. Valid P Statements: See worksheet "Catalogs".	Please correct the P Statement.
94	Worksheet "Notification Part 2" In row <r>, the invalid EUH Statement <x> has been entered. Valid EUH Statements: See worksheet "Catalogs".	Please correct the EUH Statement.
95	Worksheet "Notification Part 1"	The rule is:

No.	Error message	Remedy
	In row <r>, the H Statement number <x> has not been separated from the following text by a colon.	H<H Statement No>:<text>
96	Worksheet "Notification Part 1" In row <r>, the H Statement <x> appears in the column for the variable texts, which is, however, missing in the "H/EUH" Statements" column.	This error refers to a substance listed in the formulation. An H Statement appears in the column for the variable H Statement texts which is missing in the previous column. Please harmonize the two columns.
97	Worksheet "Notification Part 1" In row <r>, the concentration range has not been entered correctly. No <x> is allowed to precede the concentration "from" value. Elements allowed include: >, >=, approx.	If a range is indicated for the concentration, only defined qualifiers may precede the "from" value (see Chapter 3.8). Please enter a correct qualifier or delete it.
98	Worksheet "Notification Part 4" In row <r>, the pH range has not been entered correctly. No <x> is allowed to precede the pH "from" value.	If a range is indicated for the pH, no qualifier should be used (see Chapter 3.9). Please delete the qualifier entered.
99	Worksheet "Notification Part 1" In row <r>, the concentration range has not been entered correctly. No <x> is allowed to precede the concentration "to" value. Elements allowed include: <, <=, =, approx.	If a range is indicated for the concentration, only defined qualifiers may precede the "to" value (see Chapter 3.8). Please enter a correct qualifier or delete it.
100	Worksheet "Notification Part 2" Entries for "Labelling under the GefStoffV" are incomplete for the product in row <r>. Hazard symbols, if any, should also be specified or "None" entered.	The "Labelling under the GefStoffV" block should either be completed in full or left completely empty. Please enter the missing hazard symbols.
101	Worksheet "Notification Part 2" Entries for "Labelling under the GefStoffV" are incomplete for the product in row <r>. R Phrases, if any, should also be specified or "None" entered.	The "Labelling under the GefStoffV" block should either be completed in full or left completely empty. Please enter the missing R Phrases.
102	Worksheet "Notification Part 2" Entries for "Labelling under the GefStoffV" are incomplete for the product in row <r>. S Phrases, if any, should also be specified, or "None" entered.	The "Labelling under the GefStoffV" block should either be completed in full or left completely empty. Please enter the missing S-Phrases.
103	Worksheet "Notification Part 2"	The "Labelling under the CLP" block should

No.	Error message	Remedy
	Entries for “Labelling under the CLP” are incomplete for the product in row <r>. The signal word, if any, should also be specified, or “No signal word” entered.	either be completed in full or left completely empty. Please enter the missing signal word.
104	Worksheet "Notification Part 2" Entries for “Labelling under the CLP” are incomplete for the product in row <r>. Hazard pictograms, if any, should also be specified, or “None” entered.	The “Labelling under the CLP” block should either be completed in full or left completely empty. Please enter the missing hazard pictograms.
105	Worksheet "Notification Part 2" Entries for “Labelling under the CLP” are incomplete for the product in row <r>. H Statements, if any, should also be specified, or “None” entered.	The “Labelling under the CLP” block should either be completed in full or left completely empty. Please enter the missing H Statements.
106	Worksheet "Notification Part 2" Entries for “Labelling under the CLP” are incomplete for the product in row <r>. P Statements, if any should also be specified, or “None” entered.	The “Labelling under the CLP” block should either be completed in full or left completely empty. Please enter the missing P Statements.
107	Worksheet "Notification Part 3" In row <r>, no biocide main group is specified for an existing biocide product type or biocide product type subgroup Please select the biocide main group.	For a biocide category, the main group has to be selected first, followed by the product type and the product type subgroup. The main group has been deleted after selection. Either the main group should be entered again, or product type and product type subgroup deleted as well.
108	Worksheet "Notification Part 3" In row <r>, the invalid biocide main group <x> has been entered. Valid biocide main groups: See worksheet “Catalogs”.	Please select a main group from the pick list.
109	Worksheet "Notification Part 3" In row <r>, the invalid biocide product type <x> has been entered. Valid biocide product types: See worksheet “Catalogs”.	Please select a product type from the pick list.
110	Worksheet "Notification Part 3" In row <r>, a biocide product type subgroup has been specified but a biocide product type is missing. Please select the biocide product type.	For a biocide category, the main group has to be selected first, followed by the product type and the product type subgroup. The product type has been deleted after selection. Either the product type should be entered again, or the product type subgroup deleted as well.
111	Worksheet "Notification Part 3" In row <r>, the invalid biocide product	Please select a product type subgroup from the pick list or delete the invalid entry.

No.	Error message	Remedy
	type subgroup <x> has been entered. Valid biocide product type subgroups: See worksheet "Catalogs".	
112	Worksheet "Notification Part 3" In row <r>, no Category of Use Level 1 has been specified, although a selection has been made on Level 2. Please make a selection on Level 1.	For a category of use, a selection has to be made first on Level 1, followed by Level 2. The selection on Level 1 has been made and deleted again. Either the selection on Level 1 should be repeated or that on Level 2 deleted as well.
113	Worksheet "Notification Part 3" In row <r>, the invalid category of use Level 1 <x> has been entered. Valid categories of use: See worksheet "Catalogs".	Please make a selection from the pick list on Level 1.
114	Worksheet "Notification Part 3" In row <r>, the invalid category of use Level 2 <x> has been entered. Valid categories of use: See worksheet "Catalogs".	Please make a selection from the pick list on Level 2.
115	Worksheet "Notification Part 2" For the product in row<r>, the entry "None" for the CLP classification categories must not be combined with other data.	Entering of one or more CLP classification categories will exclude "None" as an entry.
200	Information on products is missing on Worksheet "Notification Part 2". Keep in mind that either "Labelling under the GefStoffV" or "Labelling under the CLP" are required entries.	Required entries are missing. Please complete the entries required.
201	Information on products is missing on Worksheet "Notification Part 3". Keep in mind that field of application and intended use are required entries.	Required entries are missing. Please complete the entries required.
202	Information on products is missing on Worksheet „Notification Part 4“. Keep in mind that specification of the packaging is required.	Required entries are missing. Please complete the entries required.
203	This is no valid BfR company code (no more than 5 digits).	A valid BfR company code consists of no more than 5 digits.
500	This macro requires Excel 97 or higher.	Please use a more recent Excel version.