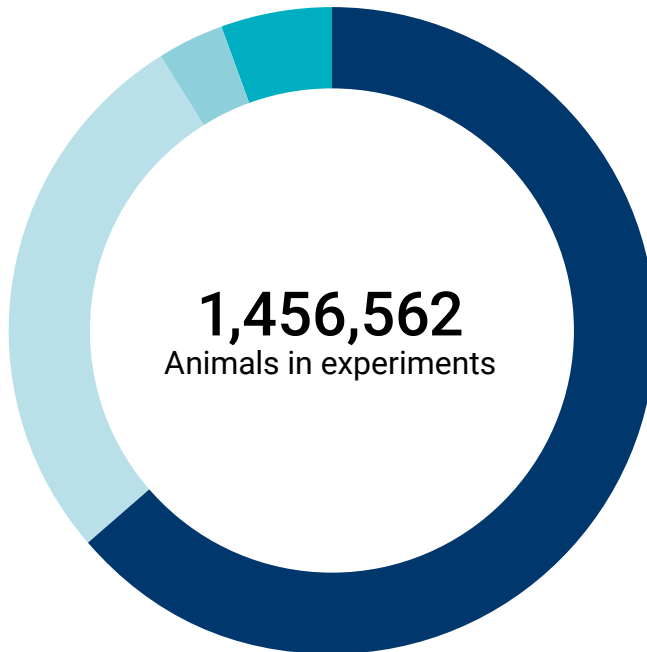


## Severity of animal experiments in 2023

pursuant to TierSchG section 7(2)



**mild**  
63.8 % (928,562)

**moderate**  
27.5 % (400,052)

**severe**  
3.5 % (50,741)

**non-recovery**  
5.3 % (77,207)

Proportion of severities in percent (absolute number in brackets)

Source: German Federal Institute for Risk Assessment (2024)