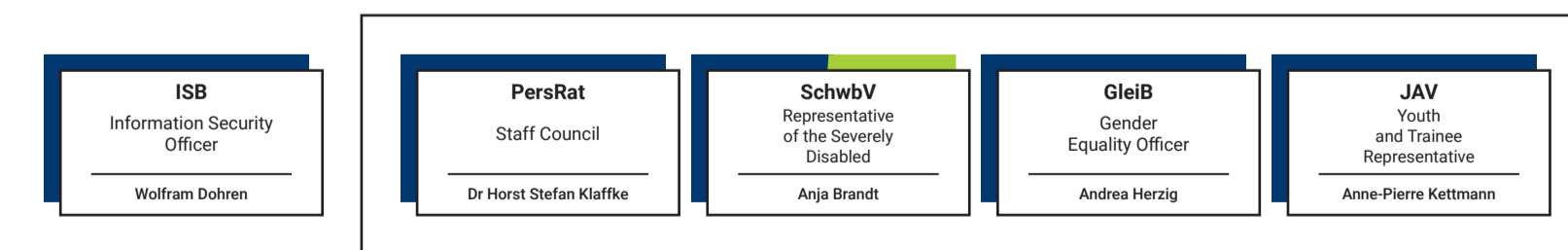
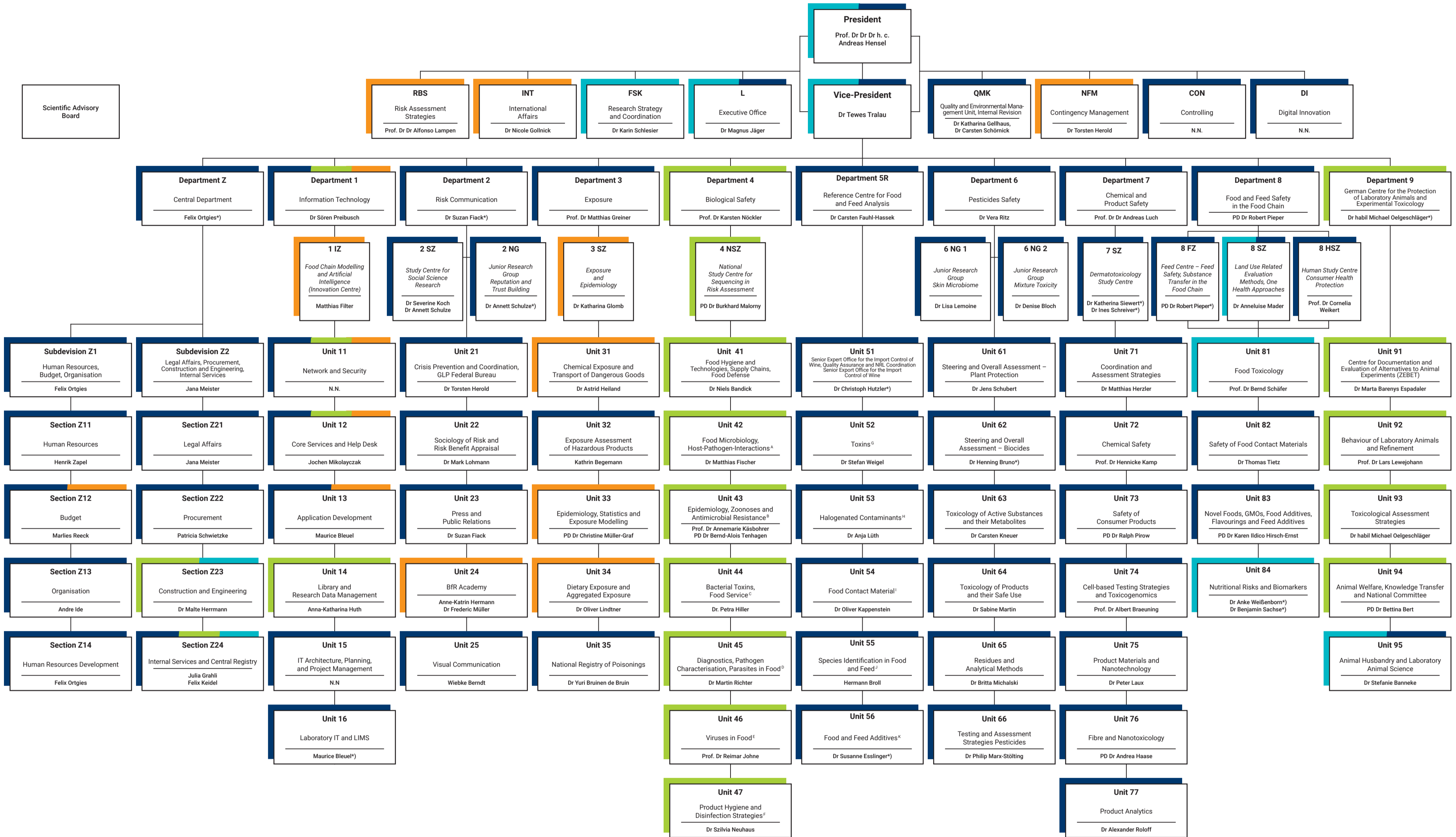


# Organisation Chart and Locations German Federal Institute for Risk Assessment (BfR)



- National Reference Laboratories**
- A NRL for *Campylobacter*, *Escherichia coli* incl. verotoxin-producing *E. coli* (VTEC) and NRL for *Salmonella*
  - B NRL for Antibiotic Resistance
  - C NRL for coagulase-positive *Staphylococcus* incl. *Staphylococcus aureus*
  - D NRL for *Trichinella*
  - E NRL for Foodborne Viruses
  - F NRL for *Listeria monocytogenes*
  - G NRL for Mycotoxins and Plant Toxins in Food and Feed and NRL for the Monitoring of Marine Biotoxins
  - H NRL for Halogenated Persistent Organic Pollutants (POPs) in Food and Feed
  - I NRL for Food Contact Materials
  - J NRL for Animal Proteins in Feedingstuffs and Reference Laboratory assisting the EURL for Testing and Validating of GMO Detection Methods
  - K NRL for Additives for Use in Animal Nutrition and NRL for Food Additives and Flavoursings

- Locations**
- Berlin Jungfernheide**  
Max-Dohrn-Straße 8–10  
10589 Berlin  
GERMANY  
P +49 30 18412-0  
F +49 30 18412-99099
  - Berlin Marienfelde**  
Diedersdorfer Weg 1  
12277 Berlin  
GERMANY  
T +49 30 18412-0  
F +49 30 18412-99099
  - Berlin Alt-Marienfelde**  
Alt-Marienfelde 17–21  
12277 Berlin  
GERMANY  
P +49 30 18412-0  
F +49 30 18412-99099
  - Berlin Nahmitzer Damm**  
Nahmitzer Damm 12  
12277 Berlin  
GERMANY  
P +49 30 18412-0  
F +49 30 18412-99099