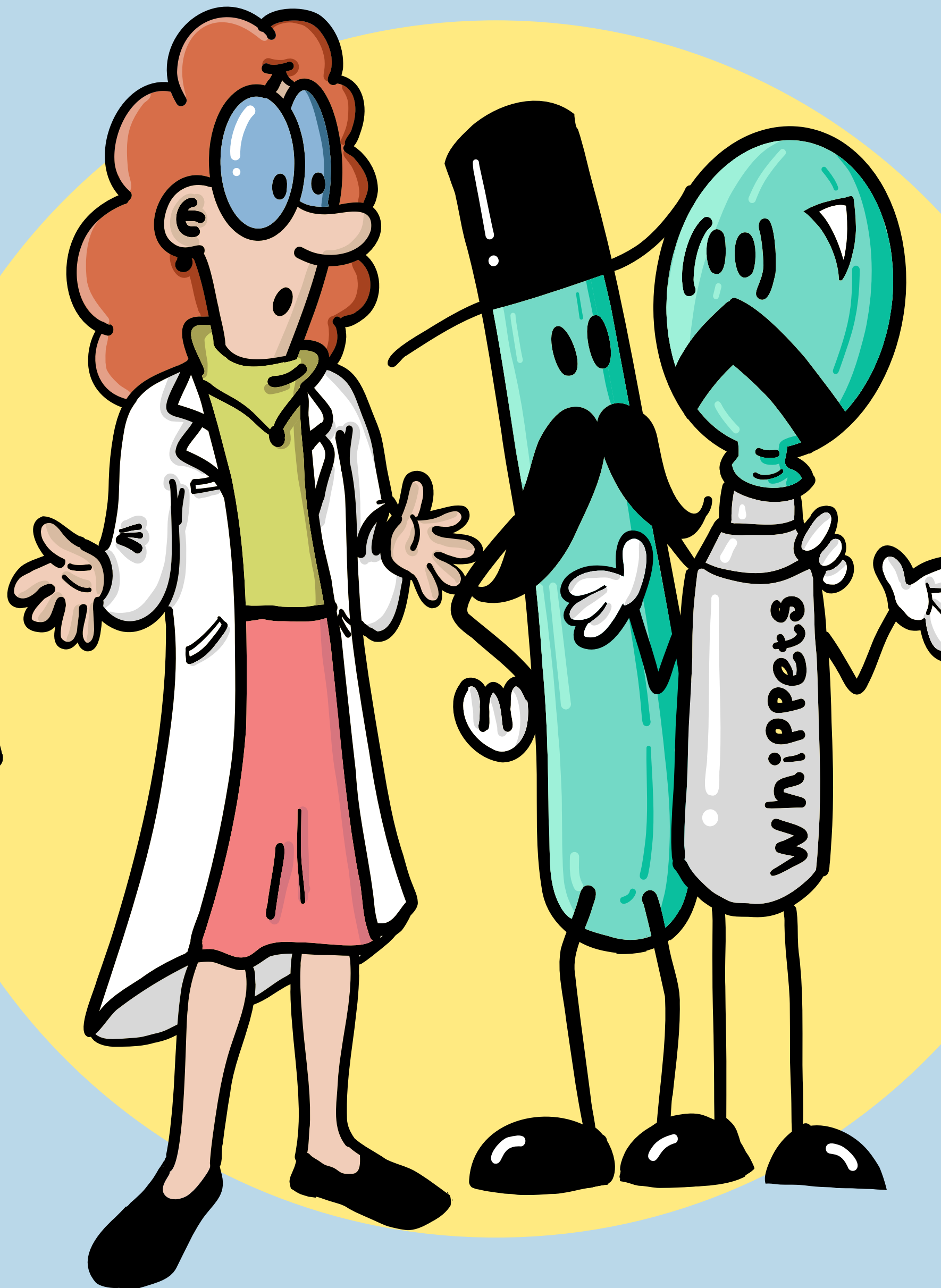
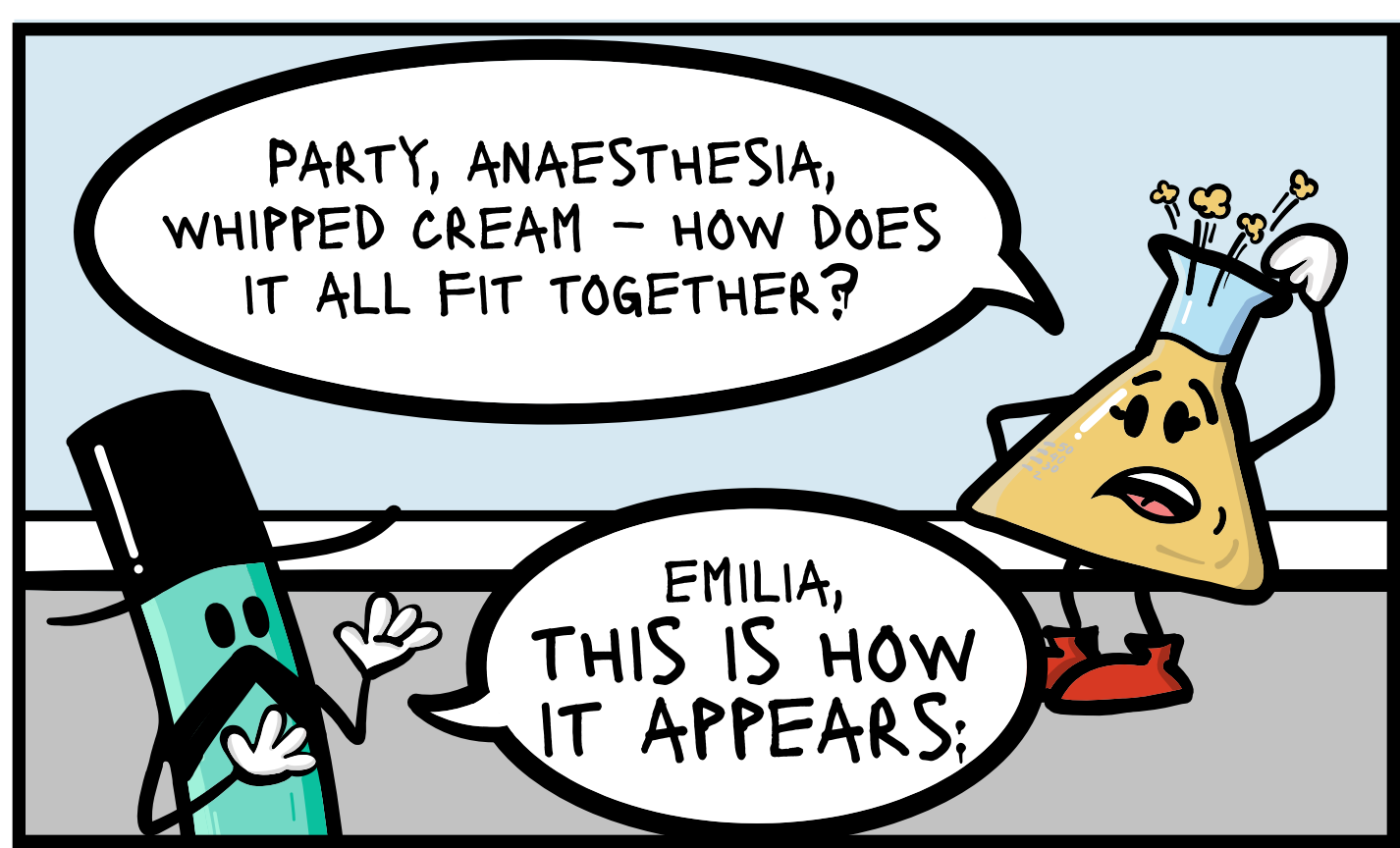
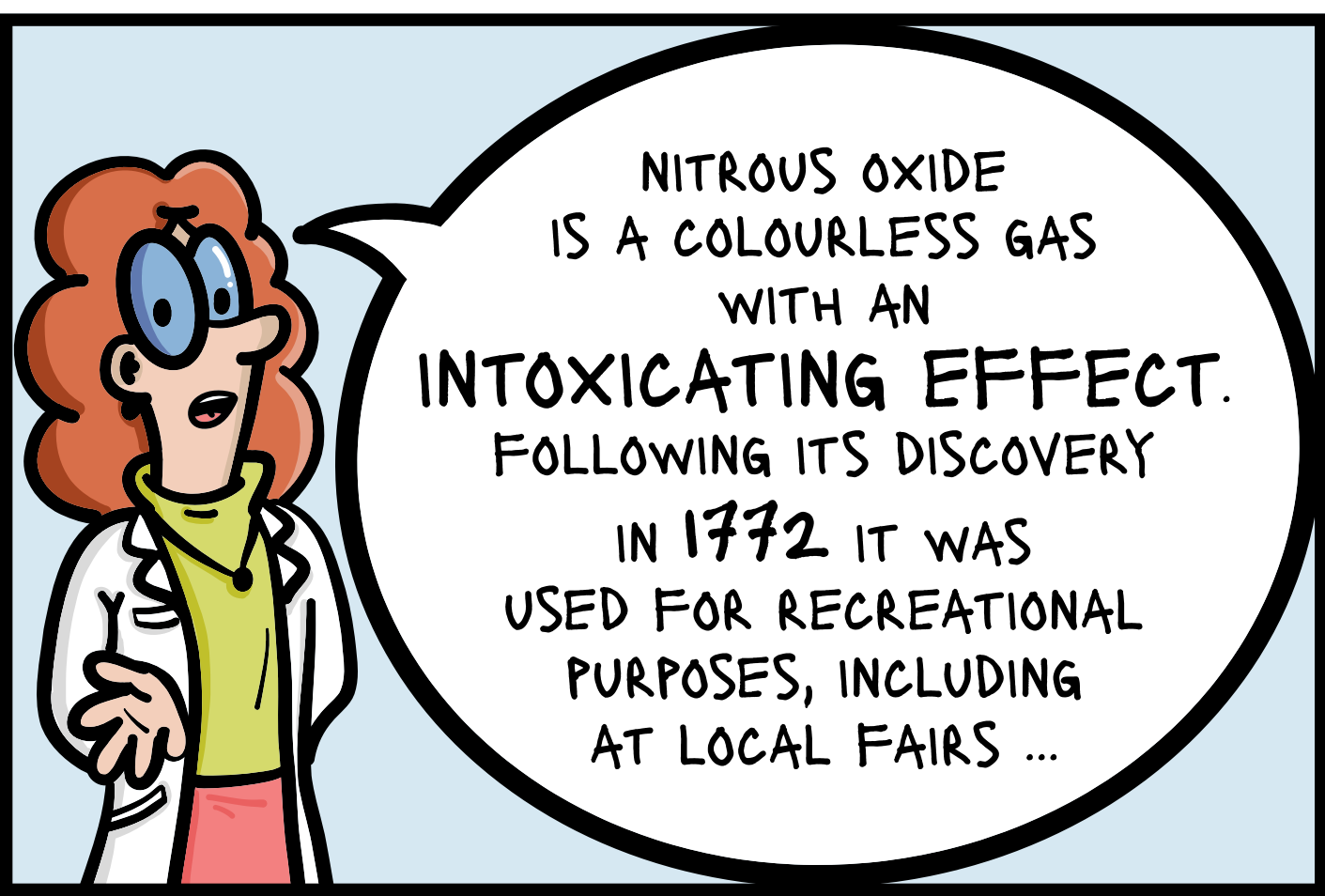
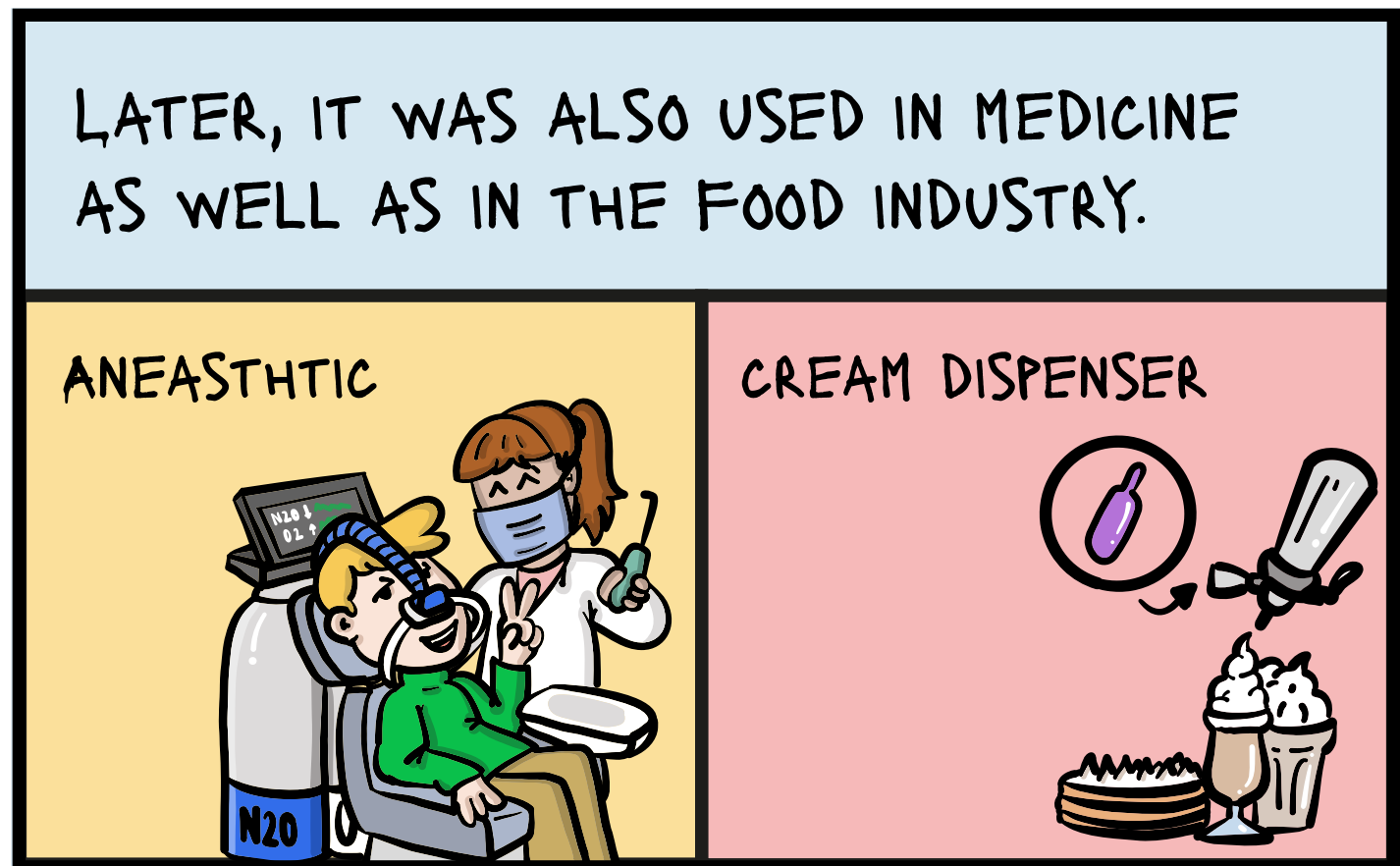


LAUGHING GAS



WHAT DOES
SCIENCE SAY?

THE BFR SCIENCE COMIC



N2O: MECHANISM OF ACTION

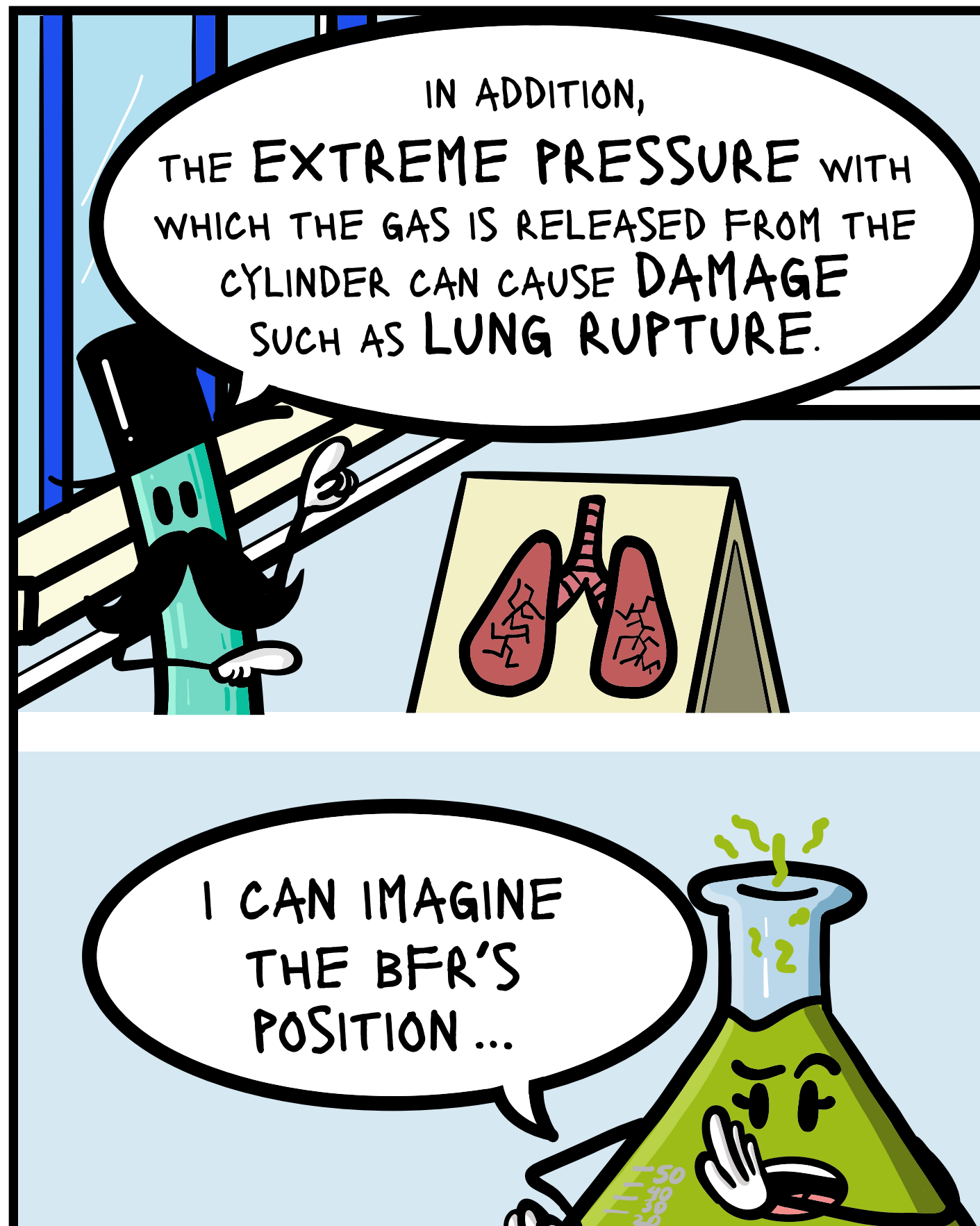
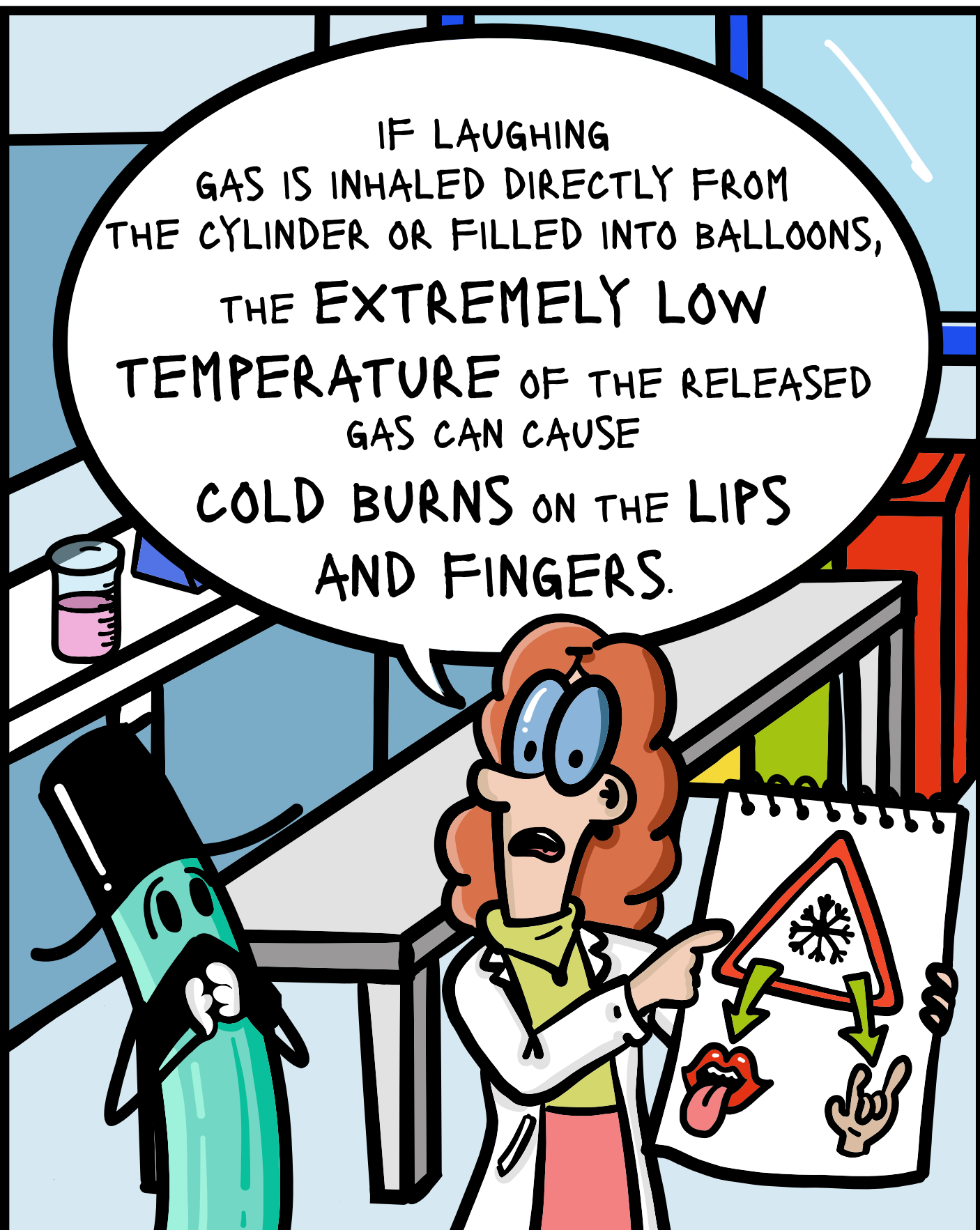
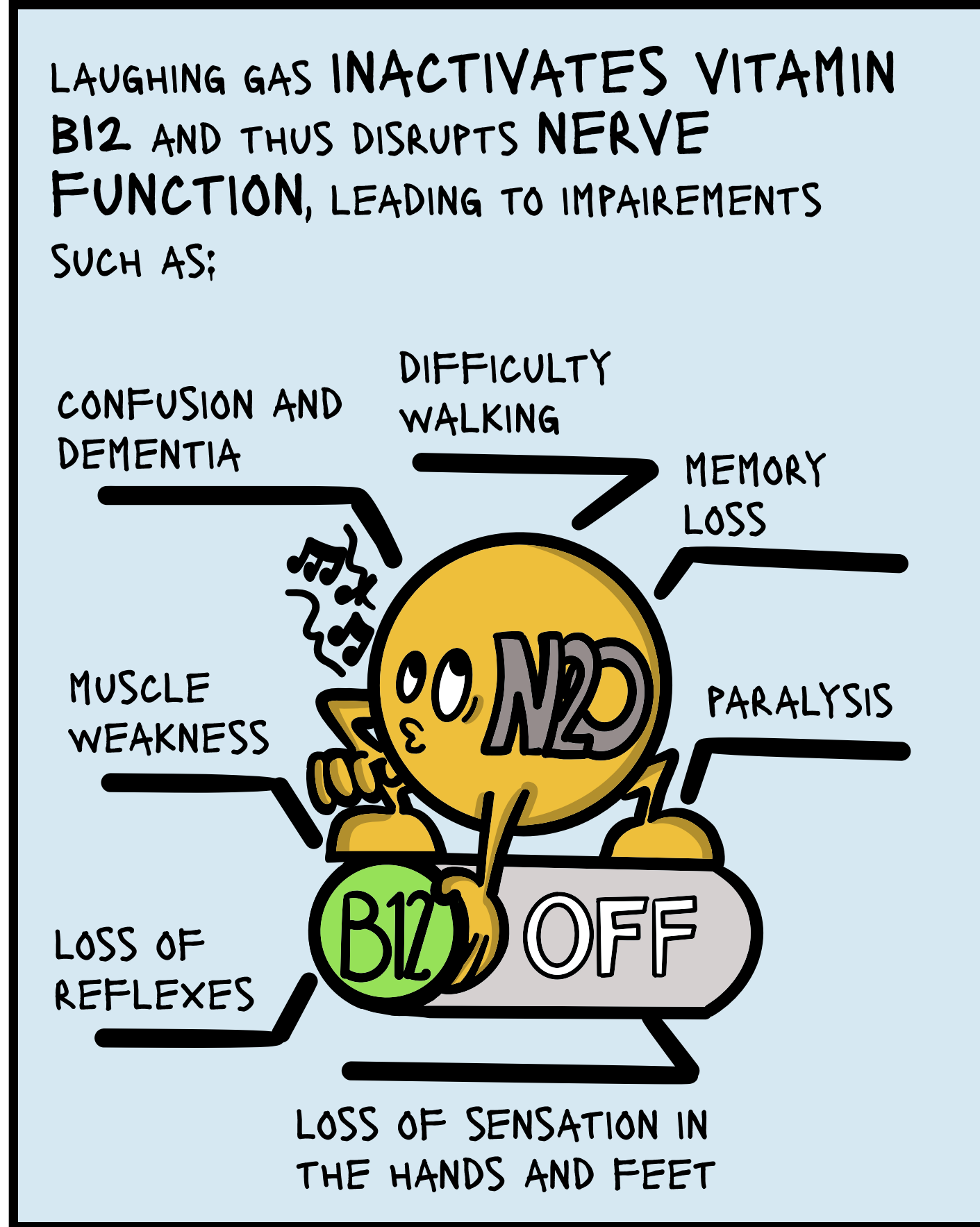
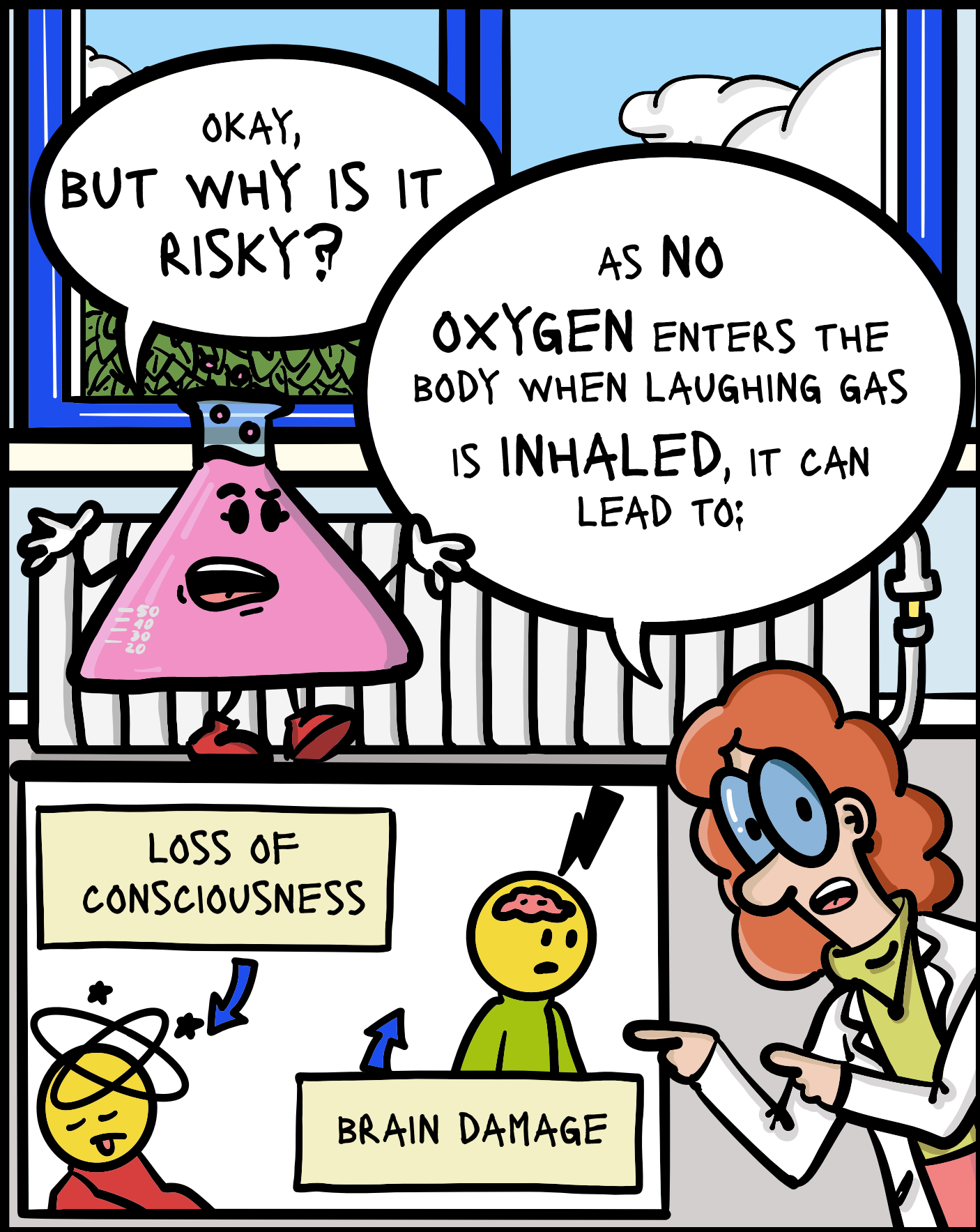
WHEN LAUGHING GAS IS INHALED, IT ENTERS THE LUNGS, THEN THE BLOODSTREAM AND FINALLY THE BRAIN.

NEURO-TRANSMITTERS

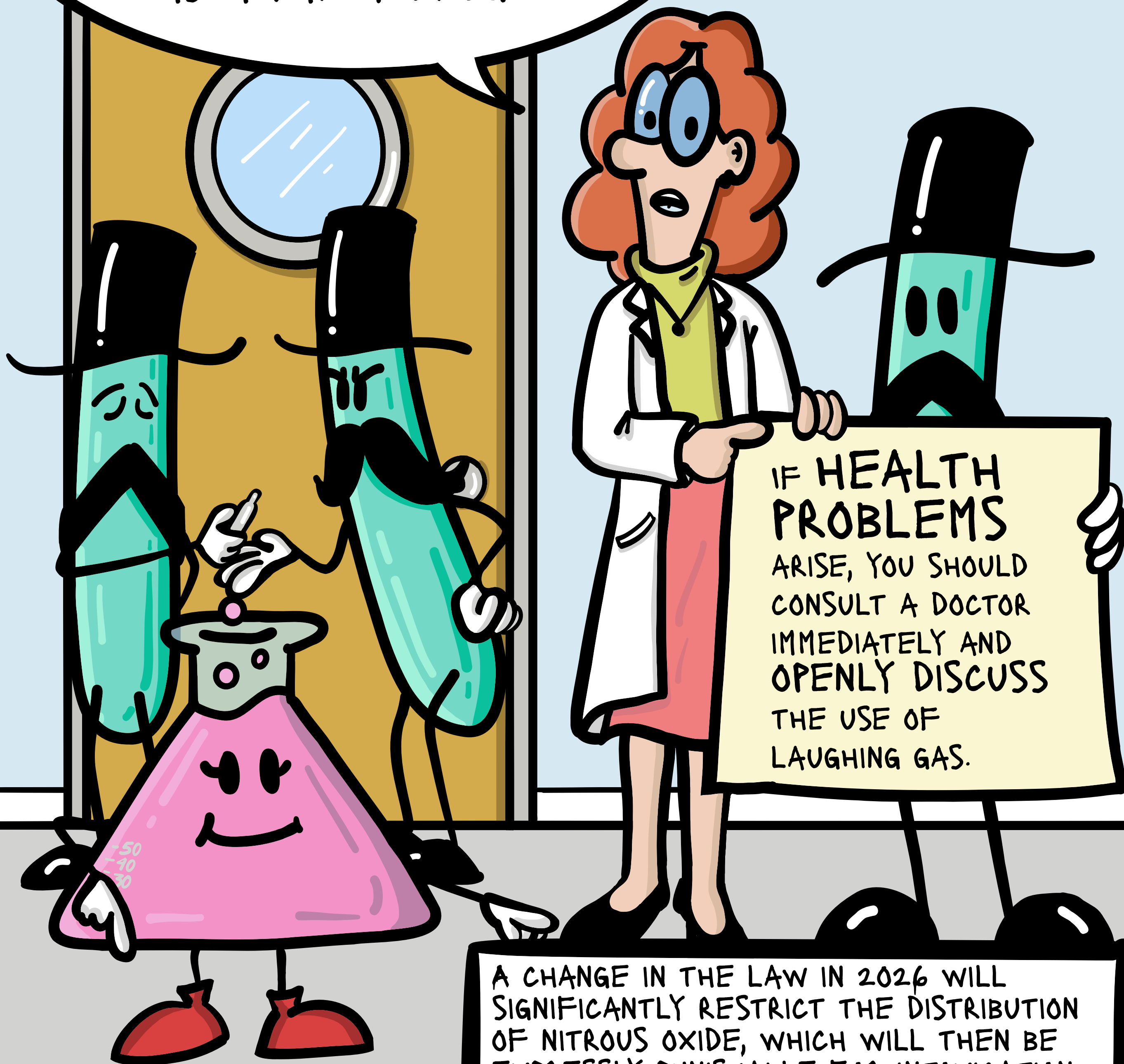
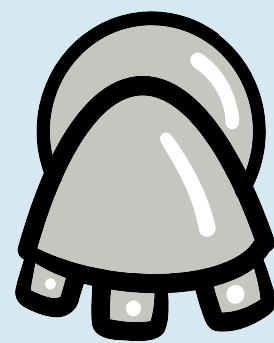
NEURONS

SO FAR, WE KNOW THAT IT AFFECTS TRANSMITTERS THAT ENABLE COMMUNICATION BETWEEN NERVE CELLS.

THIS WOULD ALSO EXPLAIN ITS ANAESTHETIC AND +++ ANALGESIC EFFECTS +++ AS WELL AS THE EUPHORIA IT TRIGGERS!



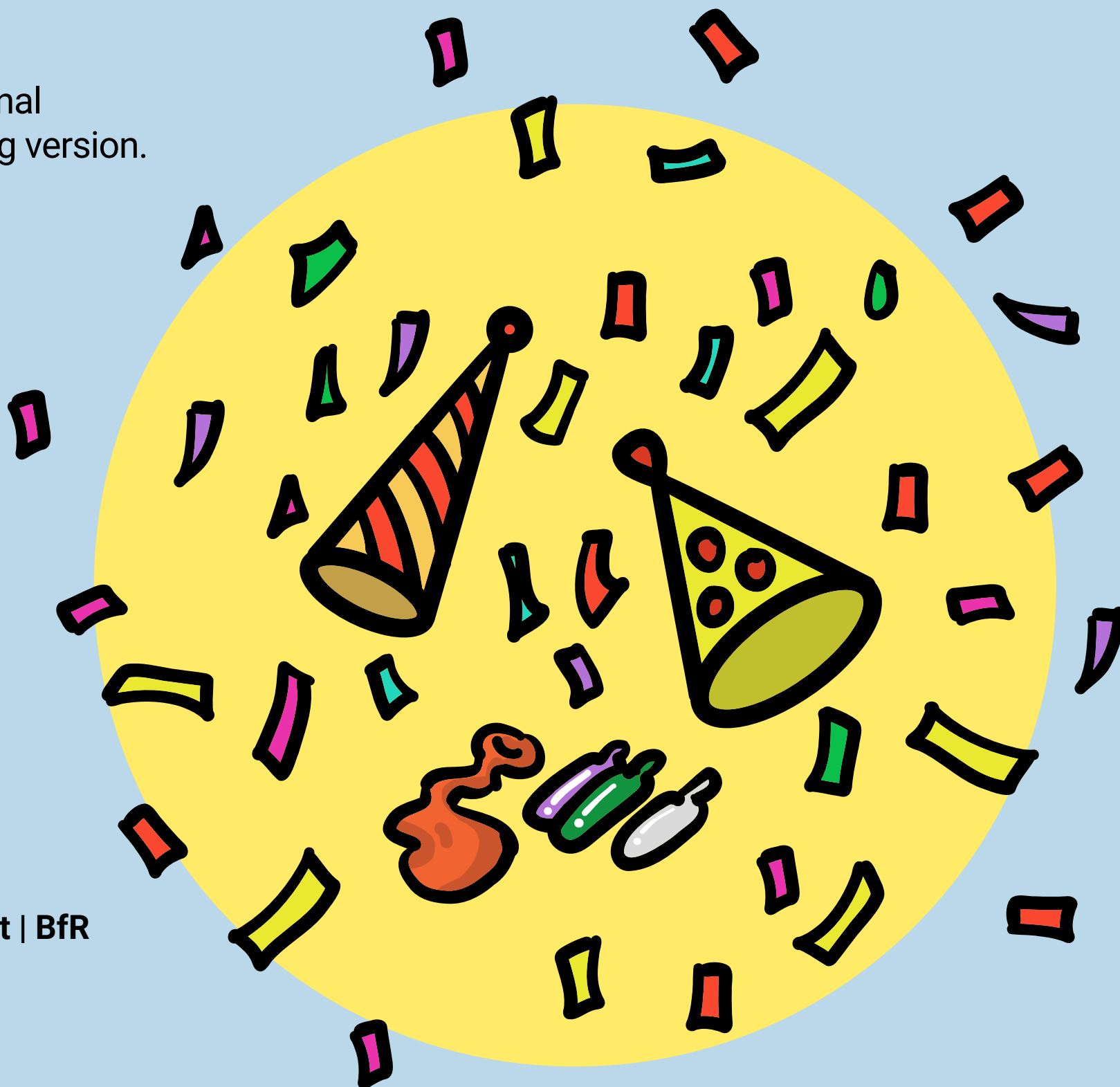
THE BFR STRONGLY
ADVISES AGAINST
THE USE OF LAUGHING GAS
AS A PARTY DRUG.



IF HEALTH
PROBLEMS
ARISE, YOU SHOULD
CONSULT A DOCTOR
IMMEDIATELY AND
OPENLY DISCUSS
THE USE OF
LAUGHING GAS.

A CHANGE IN THE LAW IN 2026 WILL
SIGNIFICANTLY RESTRICT THE DISTRIBUTION
OF NITROUS OXIDE, WHICH WILL THEN BE
EXPRESSLY PUNISHABLE FOR INTOXICATION
PURPOSES.

This text version is a translation of the original German text which is the only legally binding version.



Legal notice

Publisher:
German Federal Institute for Risk Assessment | BfR

Max-Dohrn-Straße 8-10
10589 Berlin, Germany
T +49 30 18412-0
F +49 30 18412-99099
bfr@bfr.bund.de
bfr.bund.de

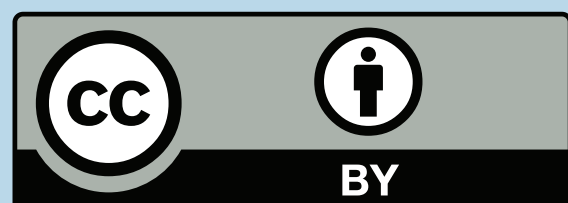
Institution under public law
Represented by the President Professor Dr Dr Dr h. c. Andreas Hensel
Supervisory Authority: German Federal Ministry of Agriculture, Food and Regional Identity
Responsible according to the German Press Law: Dr Suzan Fiack
VAT ID No. DE 165 893 448

ISSN: 3053-9013 (Online) | 3053-9072 (Print)
DOI: 10.17590/20250929-113018-0

Status: April 2026

About the BfR

The German Federal Institute for Risk Assessment (BfR) is a scientifically independent institution within the portfolio of the German Federal Ministry of Agriculture, Food and Regional Identity (BMLEH). It protects people's health preventively in the fields of public health and veterinary public health. The BfR provides advice to the Federal Government as well as the Federal States ('Laender') on questions related to food, feed, chemical and product safety. The BfR conducts its own research on topics closely related to its assessment tasks.



BfR | Identifying Risks –
Protecting Health

