

## MS/MS Parameters of Pesticides

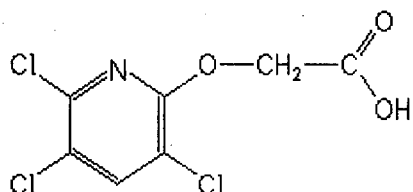
### Analyte: Triclopyr

CAS No.: 55335-06-3

Formula: C<sub>7</sub>H<sub>4</sub>Cl<sub>3</sub>NO<sub>3</sub>

Molecular mass (lowest isotopes): 254,90 amu

Structure:



Ionisation: ESI —

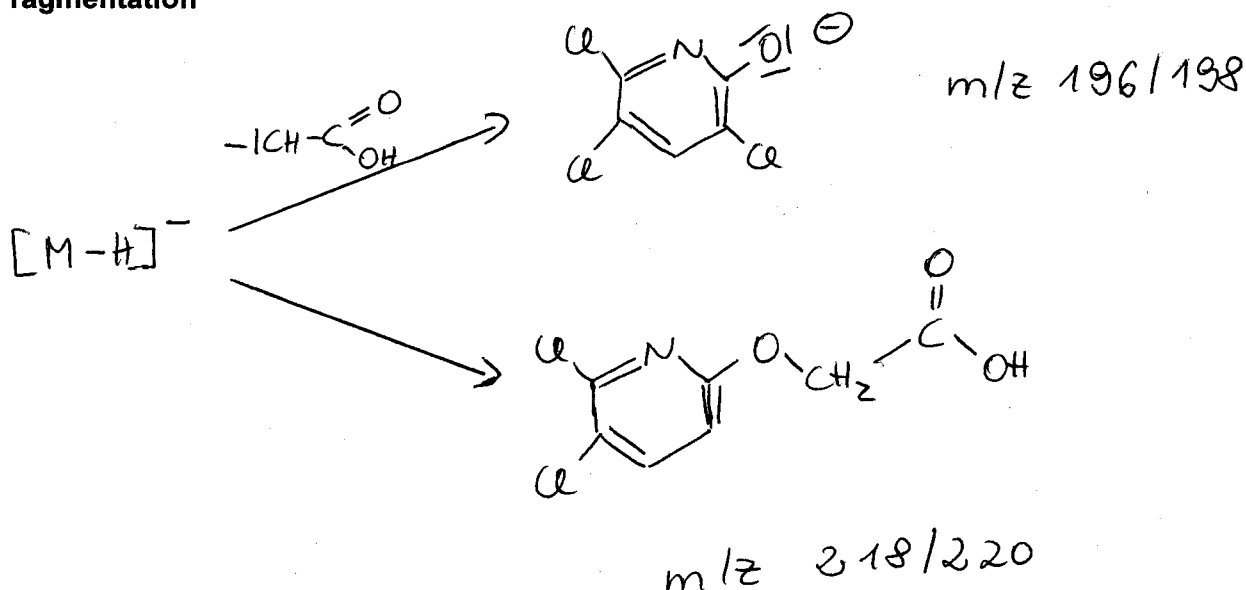
Quasimolecular ion: 255,9 amu = [M-H]<sup>-</sup>

Analyte sensitive parameter set (API 2000)

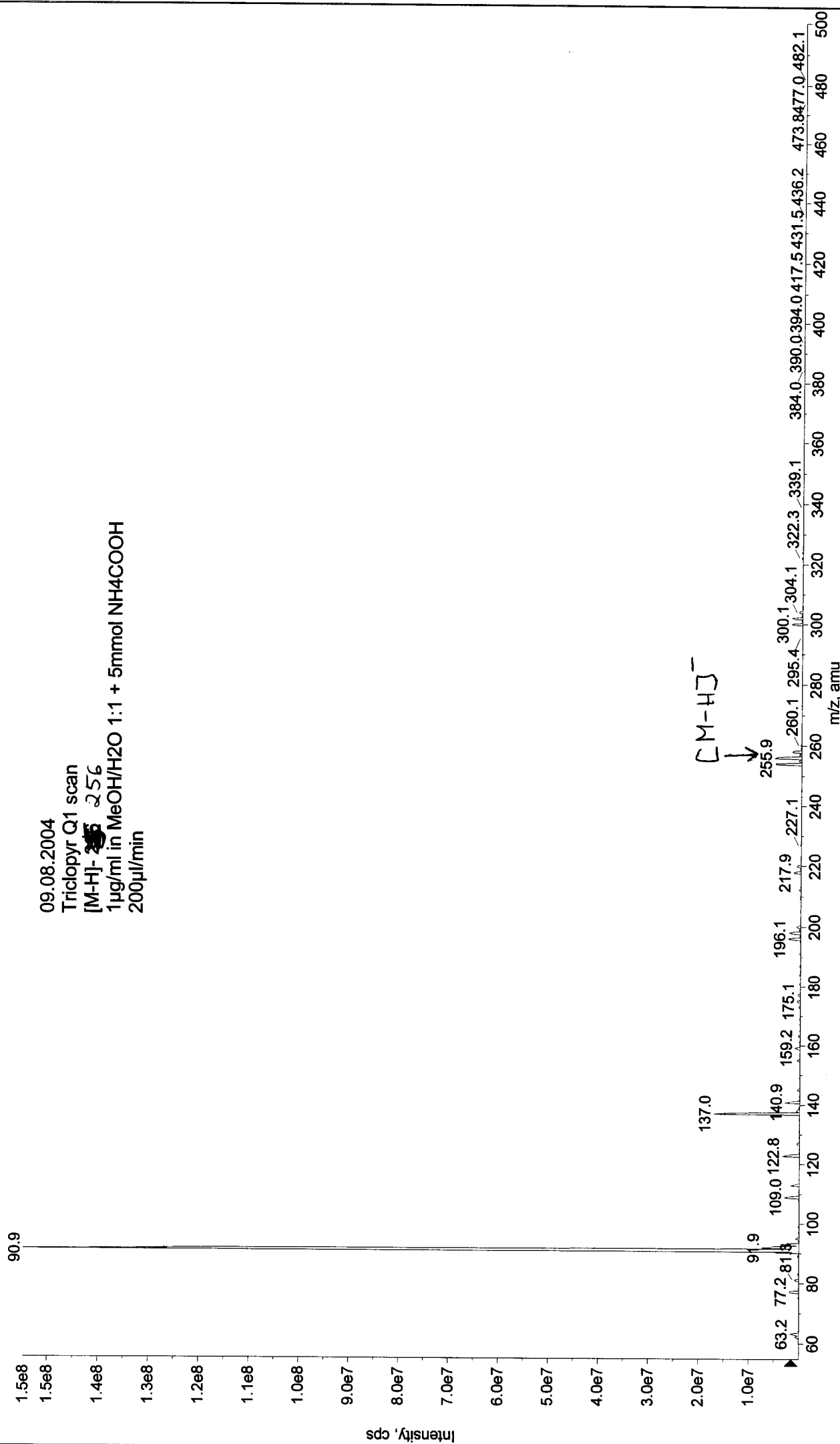
Transition	255,9 → 197,9	255,9 → 219,8
Declustering potential (DP) <sup>*)</sup>	-16V	-16 V
Focusing potential (FP)	-320 V	-330 V
Entrance potential (EP)	-10,0 V	-9,5 V
Collision cell entrance potential (CEP)	-22 V	-22 V
Collision energy (CE)	-12 V	-6 V
Collision cell exit potential (CXP)	-12 V	-14 V

<sup>\*)</sup> For API 3000 and 4000 enhance DP by 20V

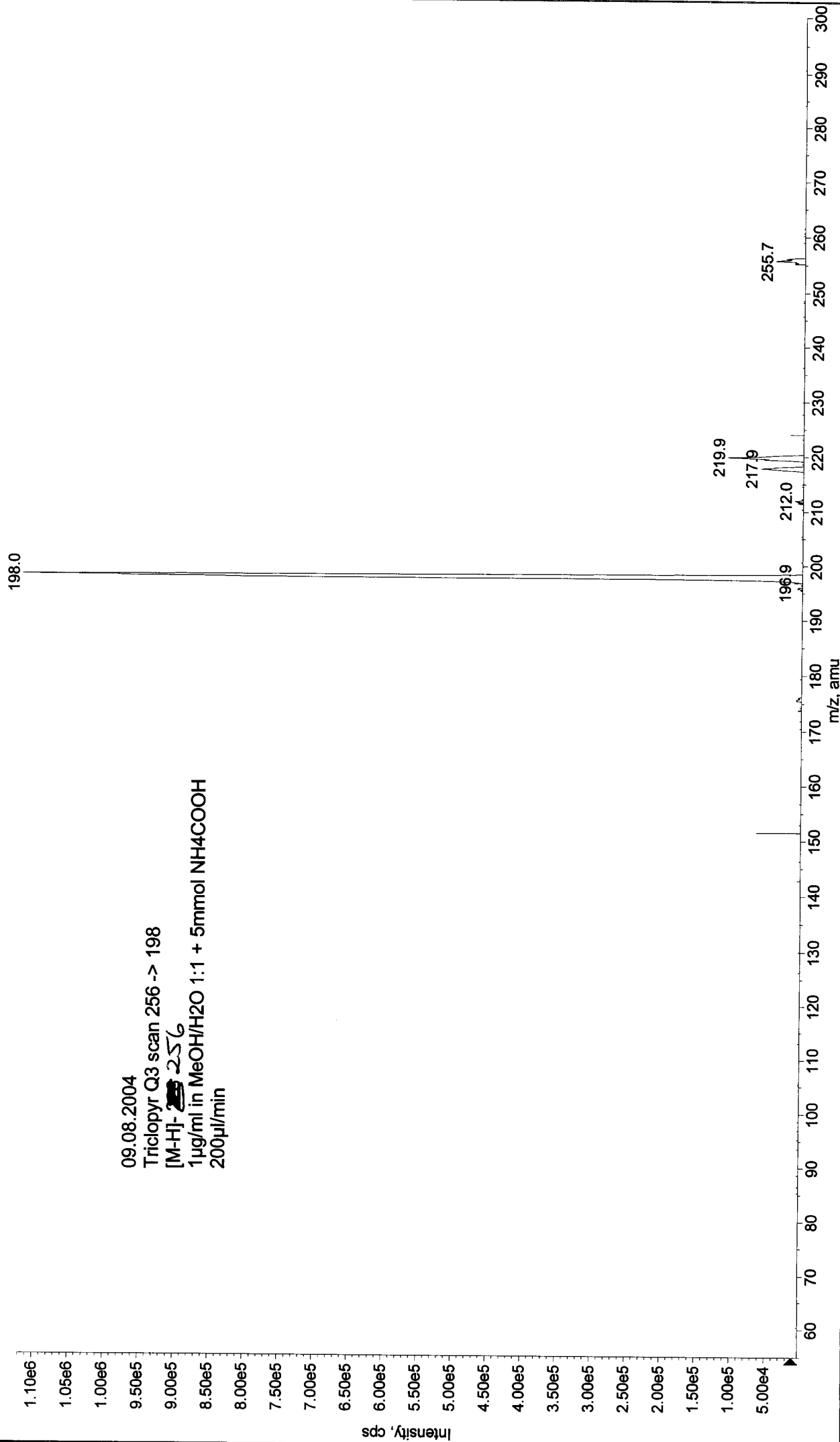
### Fragmentation



-Q1: 30 MCA scans from Sample 1 (TuneSampleID) of MT20040809121309.wiff (Turbo Spray) Max. 1.5e8 cps



Max. 1.1e6 cps.  
-MS2 (256.00): 30 MCA scans from Sample 1 (TuneSampleID) of MT20040809121546.wiff (Turbo Spray)



Printing Time: 12:18:20  
Printing Date: Monday, August 09, 2004

Acq Time: 12:17  
Acq Date: Monday, August 09, 2004  
Acq File: MT20040809121727.wiff

Sample Comment:  
Sample Name: TuneSampleID  
Batch Name: ManualTune.bat

